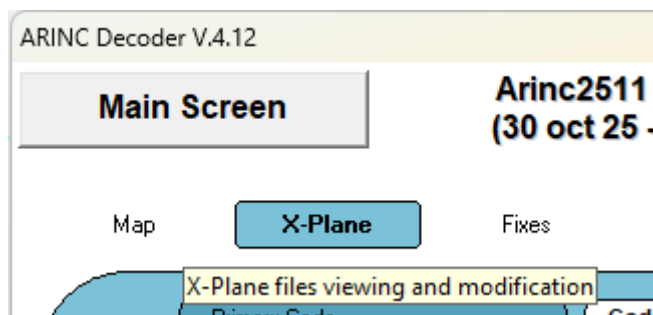


# Handling of flight simulator “XPlane” data with Arinc Decoder.

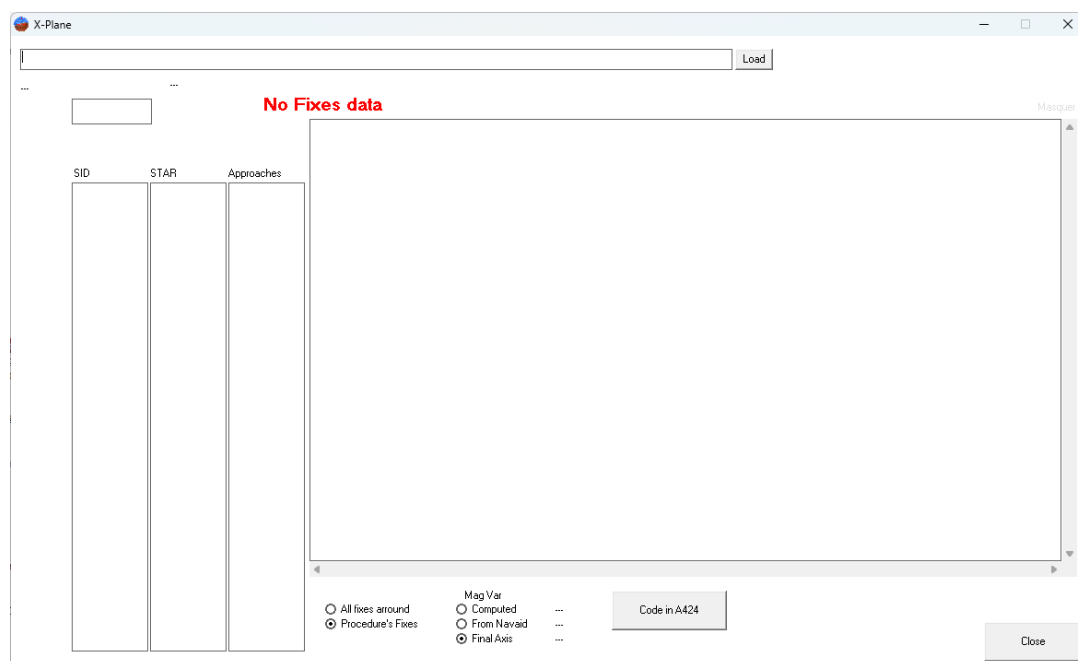
Actually Arinc Decoder is able to open all procedures of Xplane data (from Navigraph or Keyvan)

All procedures will be editable, and I need information to export the data that the user will have modified into the software.

At the first launch, with a license (perpetual or trial) for XPLANE:

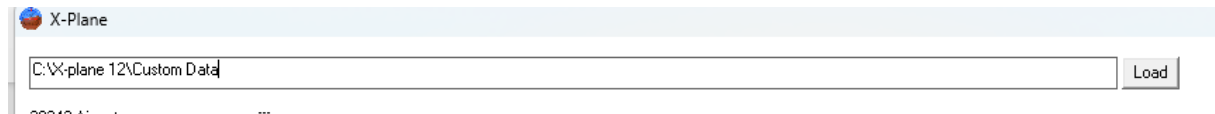


This module will show:

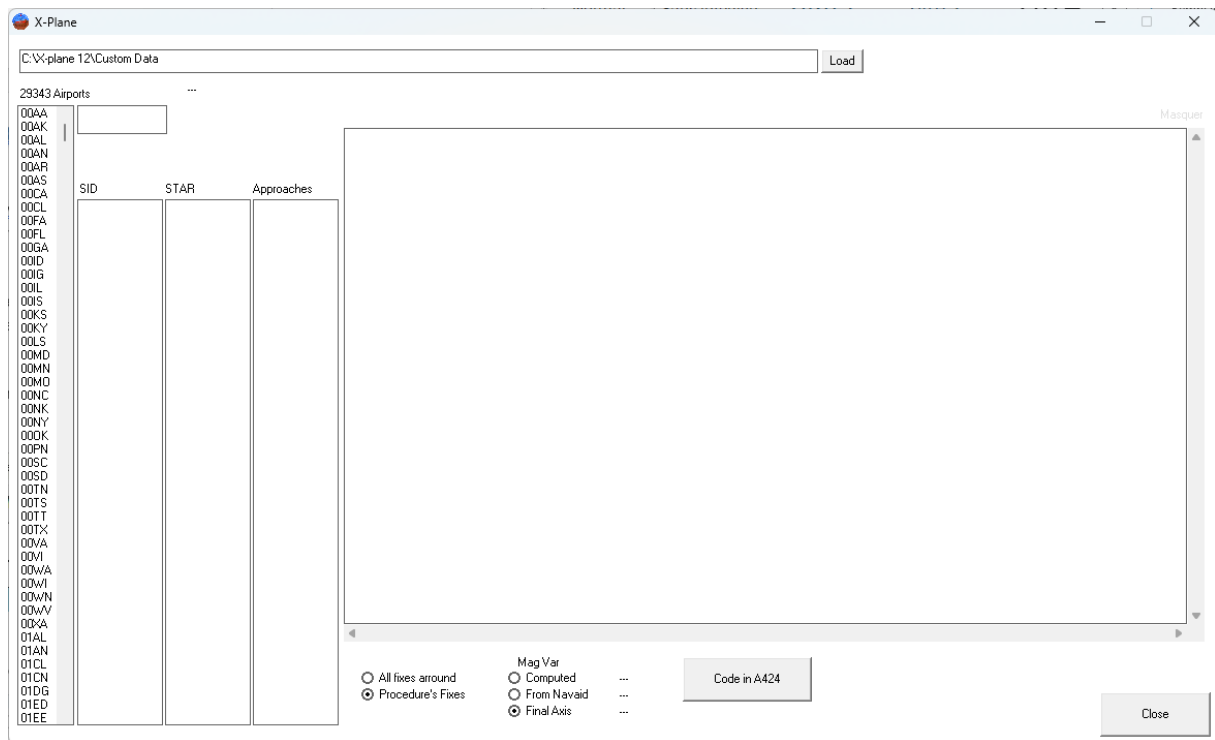


You have to paste the path of your Xplane data...

(my example is: C:\X-plane 12\Custom Data, for Keyvan)



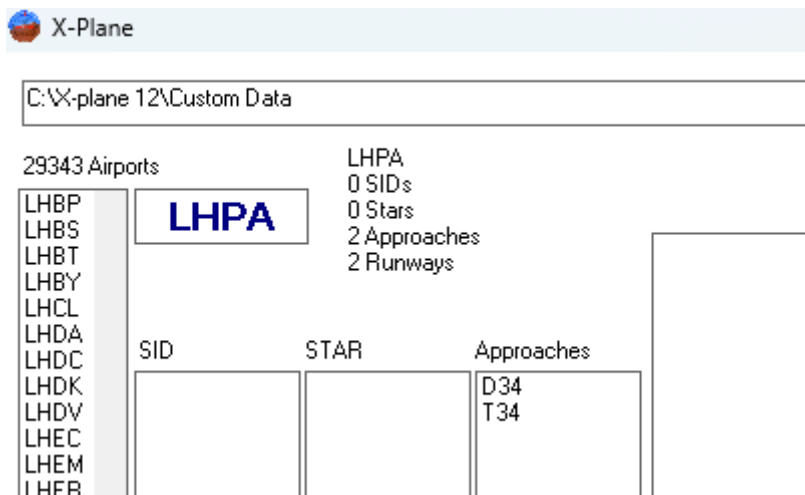
And press Load...



From now you can ask for any ICAO code in the textbox, or select it in the list.

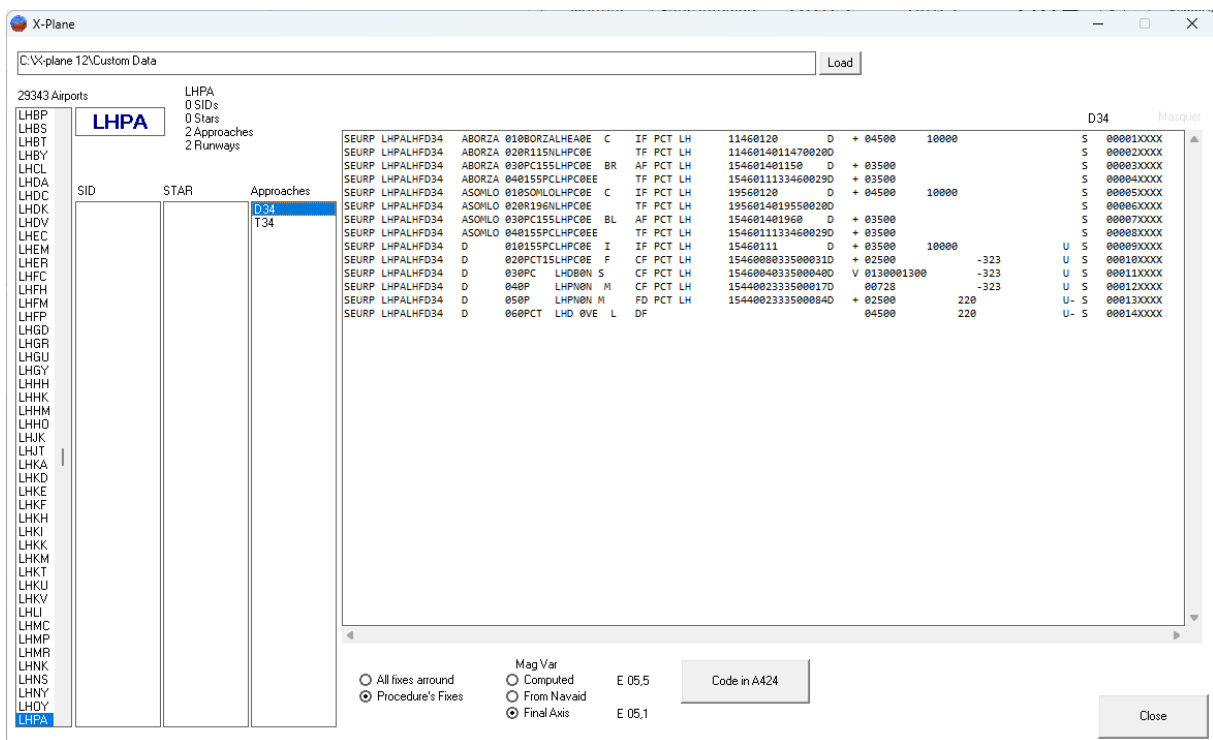
Example, I ask for “LHPA”. (Pàpa AirForce base):





No SIDs, no STARs, only 2 approaches for runway 34.

I select the VOR-DME approach (D34)



The data conversion is done for all objects in Arinc 424 after pressing on the button “Code in A424”.

**A424 Procedure Design**

1 Res  
XPlane-LHPA-D34.cus

Filter:

Buttons: Duplicate, Rename, Delete File, Edit, Refresh, Manual Coding

Runway Via: BORZA, SOMLO

Via: BORZA, SOMLO

W/pt Term: 155PC, PCT15, R115N, R196N, SOMLO

W/pt Enr: BORZA, PC, P

NDB: P

Term: PCT

VHF: PCT

Tacan: P

DME: P

Runways: RW16, RW34

ILS: P

**Approach**

EUR, Standard, Tailored, LHPA, Airport, LH, D34, Procedure, 5.1° E

VORDME Approach D

P/T sequencing OK.

Runway Management

Data Charting, Flight Planning, More, Validate, Export, Optimize, Save

**Approach Transitions**

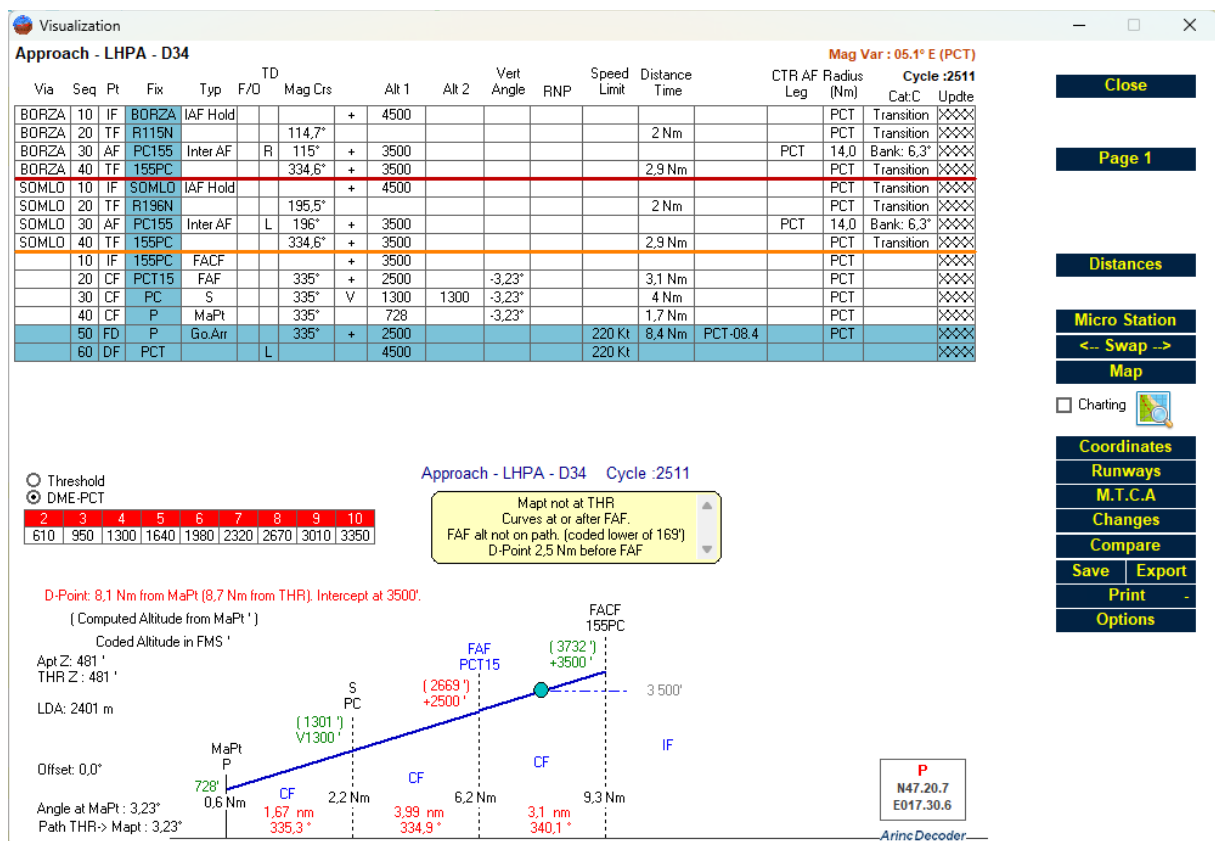
| SEURP | LHPALHFD34 | ABORZA | 0100RZALHEARE  | C  | IF  | PCT | LH | 11460120          | D | + 04500 | 10000 | S | 00001XXXX |
|-------|------------|--------|----------------|----|-----|-----|----|-------------------|---|---------|-------|---|-----------|
| SEURP | LHPALHFD34 | ABORZA | 020R115NLHPCBE | TF | PCT | LH  |    | 11460140114700280 |   |         |       | S | 00002XXXX |
| SEURP | LHPALHFD34 | ABORZA | 030PC155LHPCBE | BR | AF  | PCT | LH | 1546014011150     | D | + 03500 |       | S | 00003XXXX |
| SEURP | LHPALHFD34 | ABORZA | 040155PCLHPCBE | TF | PCT | LH  |    | 15460111334600290 |   | + 03500 |       | S | 00004XXXX |
| SEURP | LHPALHFD34 | ASOMLO | 01050RLOLHPCBE | C  | IF  | PCT | LH | 15560120          | D | + 04500 | 10000 | S | 00005XXXX |
| SEURP | LHPALHFD34 | ASOMLO | 020R196NLHPCBE | TF | PCT | LH  |    | 15560140195500280 |   |         |       | S | 00006XXXX |
| SEURP | LHPALHFD34 | ASOMLO | 030PC155LHPCBE | BL | AF  | PCT | LH | 154601401960      | D | + 03500 |       | S | 00007XXXX |
| SEURP | LHPALHFD34 | ASOMLO | 040155PCLHPCBE | TF | PCT | LH  |    | 15460111334600290 |   | + 03500 |       | S | 00008XXXX |

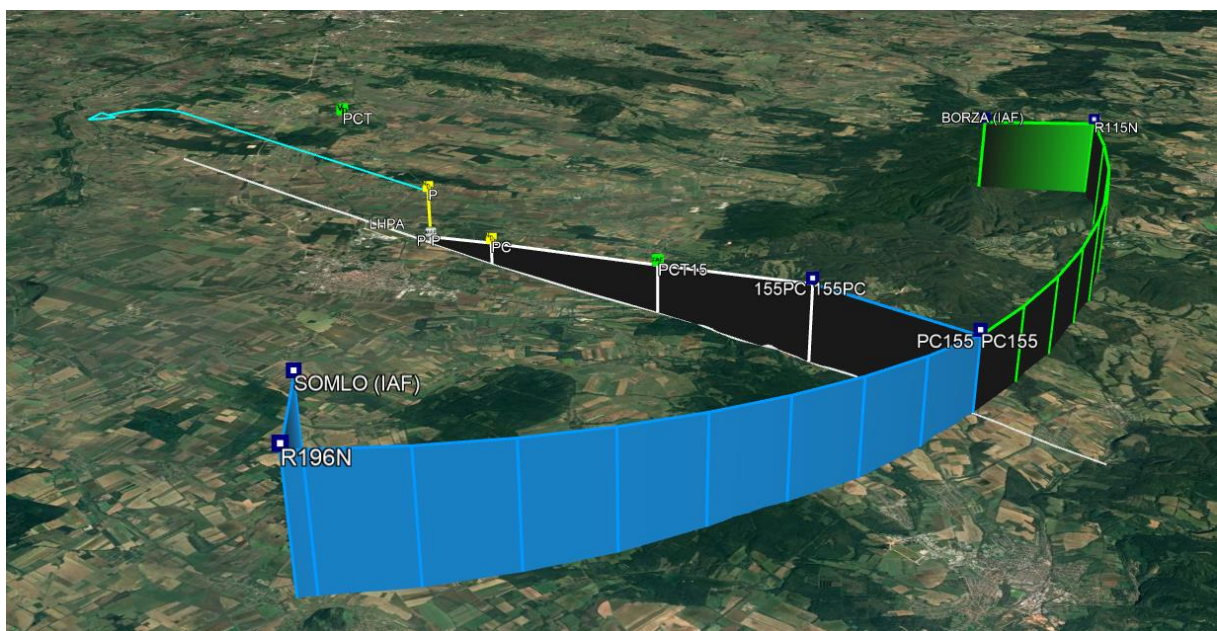
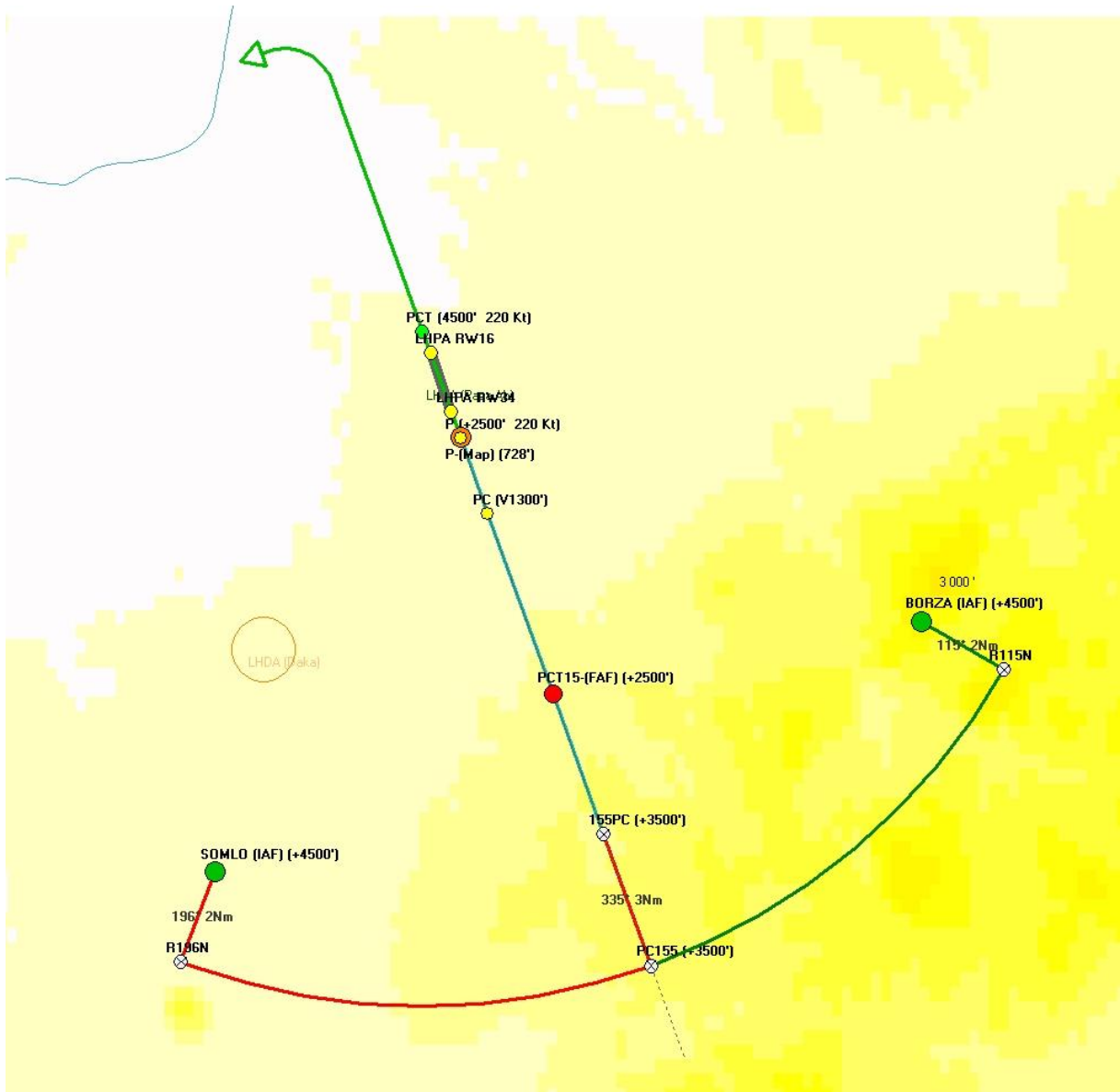
**Final Approach + Missed App**

| SEURP | LHPALHFD34 | D | 010155PCLHPCBE | I | IF | PCT | LH | 15460111          | D | + 03500    | 10000 | U | S | 00009XXXX |
|-------|------------|---|----------------|---|----|-----|----|-------------------|---|------------|-------|---|---|-----------|
| SEURP | LHPALHFD34 | D | 020PC155LHPCBE | F | CF | PCT | LH | 15460000335000310 | D | + 02500    |       | U | S | 00010XXXX |
| SEURP | LHPALHFD34 | D | 030PC LHD08N   | S | CF | PCT | LH | 15460004033500040 | V | 0130001300 |       | U | S | 00011XXXX |
| SEURP | LHPALHFD34 | D | 040P LHPN0N    | M | CF | PCT | LH | 1544002335000170  |   | 00720      |       | U | S | 00012XXXX |
| SEURP | LHPALHFD34 | D | 050P LHPN0N    | N | FD | PCT | LH | 1544002335000040  |   | + 02500    | 220   | U | S | 00013XXXX |
| SEURP | LHPALHFD34 | D | 060PCT LHD 0VE | L | DF |     |    |                   |   | 04500      | 220   | U | S | 00014XXXX |

Waypoint Calculation, Open, Close

From there it's easy to get the data of the procedure and to plot it on the map or on google earth.





I will try after to be able to:

modify the data,

store the changes in a different repertory

or the unique directory but make a backup of the original data.

I will after need some “Key Users “ volunteers to help me make this working (because I’m absolutely not aware of the Xplane functionalities...)

Thanks.