

# Download and open the free files of the FAA (CIFP for Coded Instrument Flight Procedures)

First of all... you visit the FAA's website...

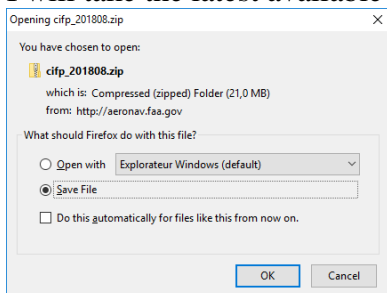
[https://www.faa.gov/air\\_traffic/flight\\_info/aeronav/digital\\_products/cifp/download/](https://www.faa.gov/air_traffic/flight_info/aeronav/digital_products/cifp/download/)

The screenshot shows the FAA website's 'Download the Coded Instrument Flight Procedures (CIFP)' page. The page features a navigation menu with categories like Aircraft, Airports, Air Traffic, Data & Research, Licenses & Certificates, Regulations & Policies, and Training & Testing. The main content area includes a breadcrumb trail, a title, a notice about a file naming convention change effective October 11, 2018, and a detailed description of the CIFP dataset. A table lists the available CIFP products with their effective and ending dates.











Product	Effective	Ending
201807 CIFP (Zip)	21 June 2018	19 Jul 2018
201808 CIFP (Zip)	19 Jul 2018	16 Aug 2018

Where you can see the table with the links to download..

I will take the latest available (cycle 1808) and I will save the file:



Few seconds after... you can open the zip and you select the FAACIFP18 file.

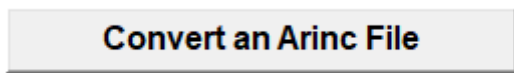
-  CIFP ATS Coverage.pdf
-  CIFP Enroute Coverage.pdf
-  CIFP Readme 1808.pdf
-  Converting ARINC 18 to 15 and 13.
-  FAA CIFP Disclaimer.pdf
-  FAACIFP13
-  FAACIFP15
-  FAACIFP18
-  IN\_CIFP.txt
-  Not In CIFP 1808.xlsx

(all other also work fine but have less information)  
Put this file in Arinc Decoder folder.

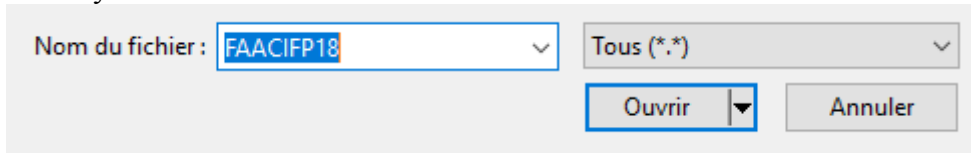
Start Arinc Decoder and press Configuration button:



And

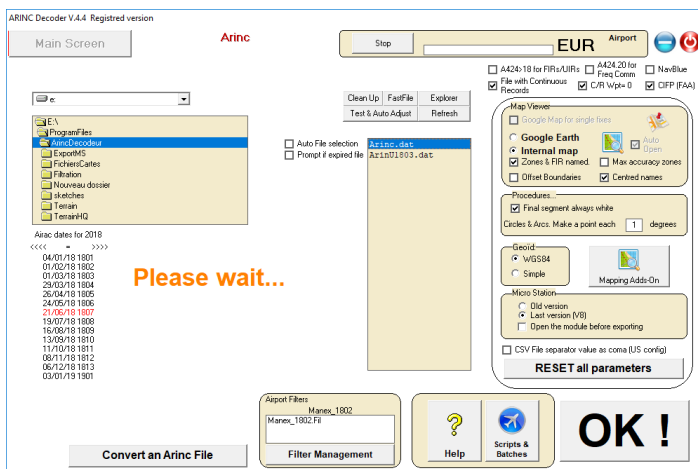


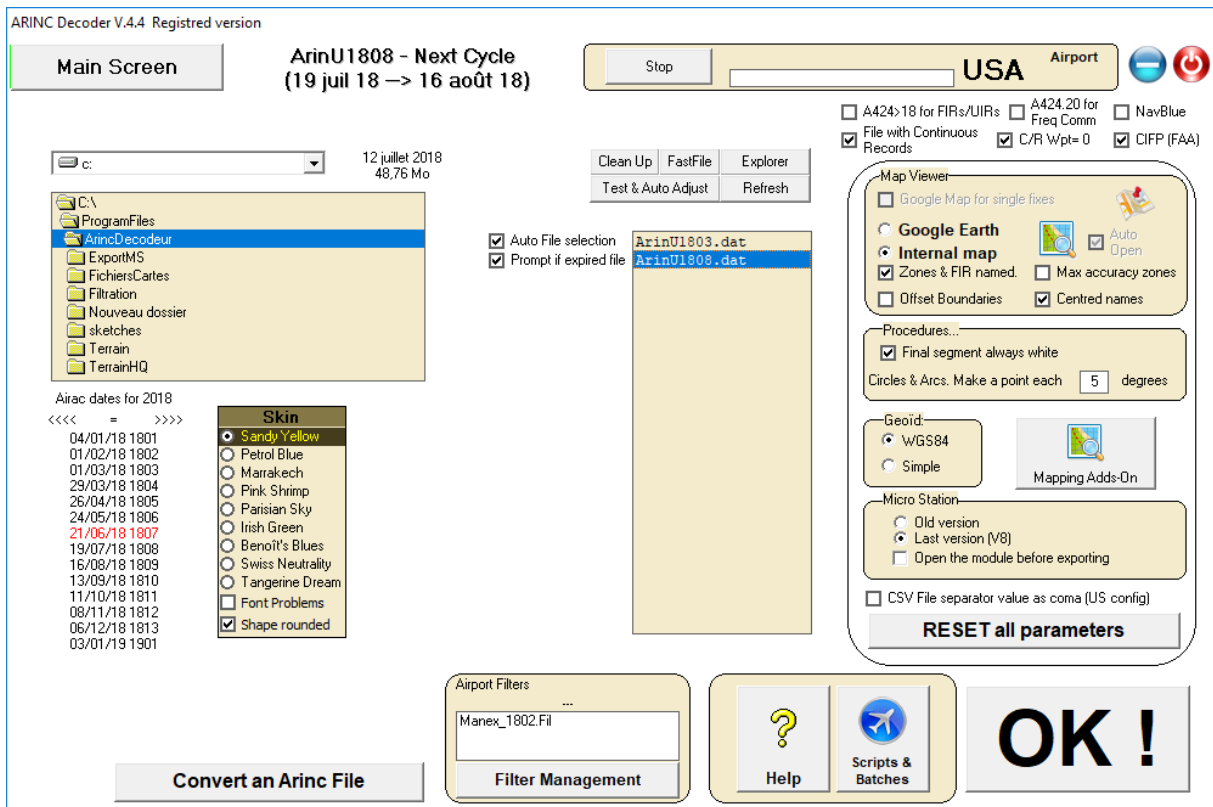
Select your file...



Then the list in the middle will gain a new file "Arinc.dat"

Select it



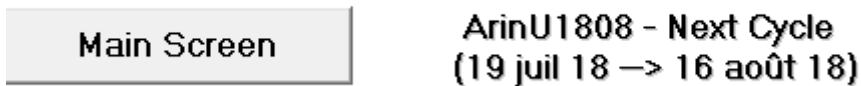


Just after the file should have been created with the correct Airac cycle and the “U” which mean that it’s a FAA file.

Click on the big OK.

Your software is really up to date for 28 days !

ARINC Decoder V.4.4 Registered version



Clic “Airport” and press “Load”

ARINC Decoder V.4.4 Registered version

Main Screen ArinU1808 - Next Cycle (19 jul 18 -> 16 août 18) 274 214 datas USA Airport

Map D.O.F Fixes MTCA Manual Coding Co-Routes / Catalog ATC Route Queries Help

Import Export Save the list  Of Selected Datas Un Select All Select All Reverse  
 Cls Select this List 12990 data(s) Compare Sort

KFFM	-	FFM	-	FERGUS FALLS MUNI-EINAR MICKEL
KFFO	-	FFO	-	WRIGHT-PATTERSON AFB
KFFT	-	FFT	-	CAPITAL CITY
KFFX	-	FFX	-	FREMONT MUNI
KFFZ	-	FFZ	-	FALCON FLD
KFGU	-	FGU	-	COLLEGEDEALE MUNI
KFGX	-	FGX	-	FLEMING-MASON
KFHB	-	FHB	-	FERNANDINA BEACH MUNI
KFHR	-	FHR	-	FRIDAY HARBOR
KFHU	-	FHU	-	SIERRA VISTA MUNI-LIBBY AAF
KFIG	-	FIG	-	CLEARFIELD-LAWRENCE
KFIN	-	FIN	-	FLAGLER EXECUTIVE
KFIT	-	FIT	-	FITCHBURG MUNI
KFKA	-	FKA	-	FILLMORE COUNTY
KFKL	-	FKL	-	VENANGO RGNL
KFKN	-	FKN	-	FRANKLIN MUNI-JOHN BEVERLY ROS
KFKR	-	FKR	-	FRANKFORT MUNI
KFKS	-	FKS	-	FRANKFORT DOW MEMORIAL FIELD
KFLD	-	FLD	-	FOND DU LAC COUNTY
KFLG	-	FLG	-	FLAGSTAFF PULLIAM

Group  
 v8  
 Micro Station  
 Map  
 ARINC Coding

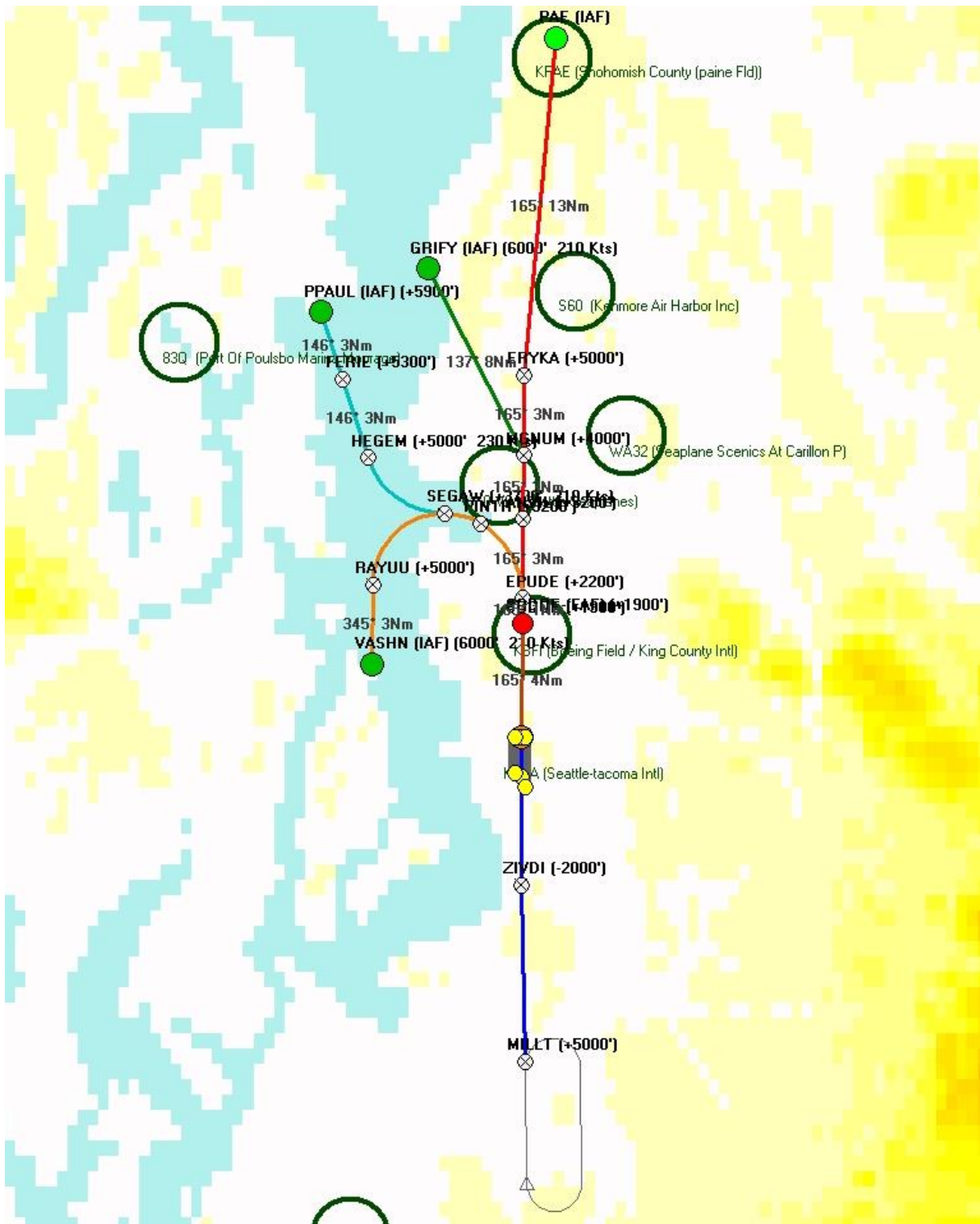
Char # 13 22 7 8 9 10 14 15 16  
 Value A 0

Filter  
 Airport ICAO IATA  
 Runways 12 852  
 ILS  Markers  GLS  
 Com freq  SBAS Path Point  
 MSA  Parkings  
 Terminal Wpts 33 790  
 2 048  SIDs  
 1 913  STARs  
 9 998  Approaches

Effectivity 1808  
 12 990 results  
 Search

We see the 12990 airports listed, with the relative data. (about 15000 procedures)

Selecting KSEA and one RNP AR approach on the map:



Approach - KSEA - H16CZ (AR)

Seattle-tacoma Intl

Mag Var : 16.0° E (Apt)

Via	Seq	Pt	Fix	Typ	F/D	Mag	Crs	Alt 1	Alt 2	Vert Angle	RNP	Speed Limit	Distance Time	Centre Leg	RFRec	Navaid	Cycle :1808	Update
GRIFY	10	IF	GRIFY	IAF				6000				210 Kts					Transition	1711
GRIFY	20	TF	MGNUM	Inter AF			+	4000			1						Transition	1310
GRIFY	30	TF	ANVIL				+	3200			0,3						Transition	1412
GRIFY	40	TF	EPUDE				+	2200			0,3						Transition	1412
GRIFY	50	TF	SODOE				+	1900			0,3						Transition	1412
PAE	10	IF	PAE														Transition	1304
PAE	20	TF	ERYKA	IAF			+	5000			1						Transition	1310
PAE	30	TF	MGNUM	Inter AF			+	4000			0,3						Transition	1412
PAE	40	TF	ANVIL				+	3200			0,3						Transition	1412
PAE	50	TF	EPUDE				+	2200			0,3						Transition	1412
PAE	60	TF	SODOE				+	1900			0,3						Transition	1412
PPAUL	10	IF	PPAUL	Inter AF			+	5900									Transition	1412
PPAUL	20	TF	FERIE				+	5300			1						Transition	1412
PPAUL	30	TF	HEGEM				+	5000			1	230 Kts					Transition	1412
PPAUL	40	RF	SEGAW		L	74,1°	+	3700			1	210 Kts	4 Nm	CFBRK			Transition	1711
PPAUL	50	RF	PINTR		R	105,1°	+	3200			1		1,5 Nm	CFBRH			Transition	1711
PPAUL	60	RF	EPUDE		R	164,3°	+	2200			1		3,5 Nm	CFBRX			Transition	1711
PPAUL	70	TF	SODOE				+	1900			0,3						Transition	1412
VASHN	10	IF	VASHN	Inter AF				6000				210 Kts					Transition	1711
VASHN	20	TF	RAYUU				+	5000			1						Transition	1412
VASHN	30	RF	SEGAW		R	74,1°	+	3700			1	210 Kts	4,4 Nm	CFMFT			Transition	1711
VASHN	40	RF	PINTR		R	105,1°	+	3200			1		1,5 Nm	CFBRH			Transition	1711
VASHN	50	RF	EPUDE		R	164,3°	+	2200			1		3,5 Nm	CFBRX			Transition	1711
VASHN	60	TF	SODOE				+	1900			0,3						Transition	1412
	20	IF	SODOE	FAF			+	1900										1412
	30	TF	RW16C	MaPt	FD			486		-3,00°	0,3							1304
	40	DF	ZIVDI	Go.Arr			-	2000			1							1711
	50	TF	MILLT		FD		+	5000			1							1310
	60	HM	MILLT		R	343,7°	+	5000					5 Nm					1711

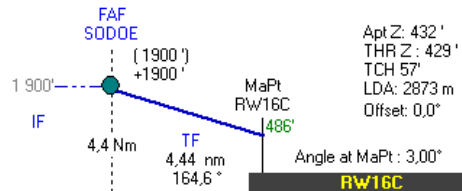
Approach - KSEA - H16CZ (AR) Cycle :1808

--- Authorization Required ---

Threshold				
5	4	3	2	1
2080	1760	1440	1120	800

D-Point: 4,4 Nm from THR ( Intercept at 1900' )  
 ( Computed Altitude from MaPt ' )  
 Coded Altitude in FMS '

RW16C  
 N47.27.8  
 W122.18.7



ArincDecoder

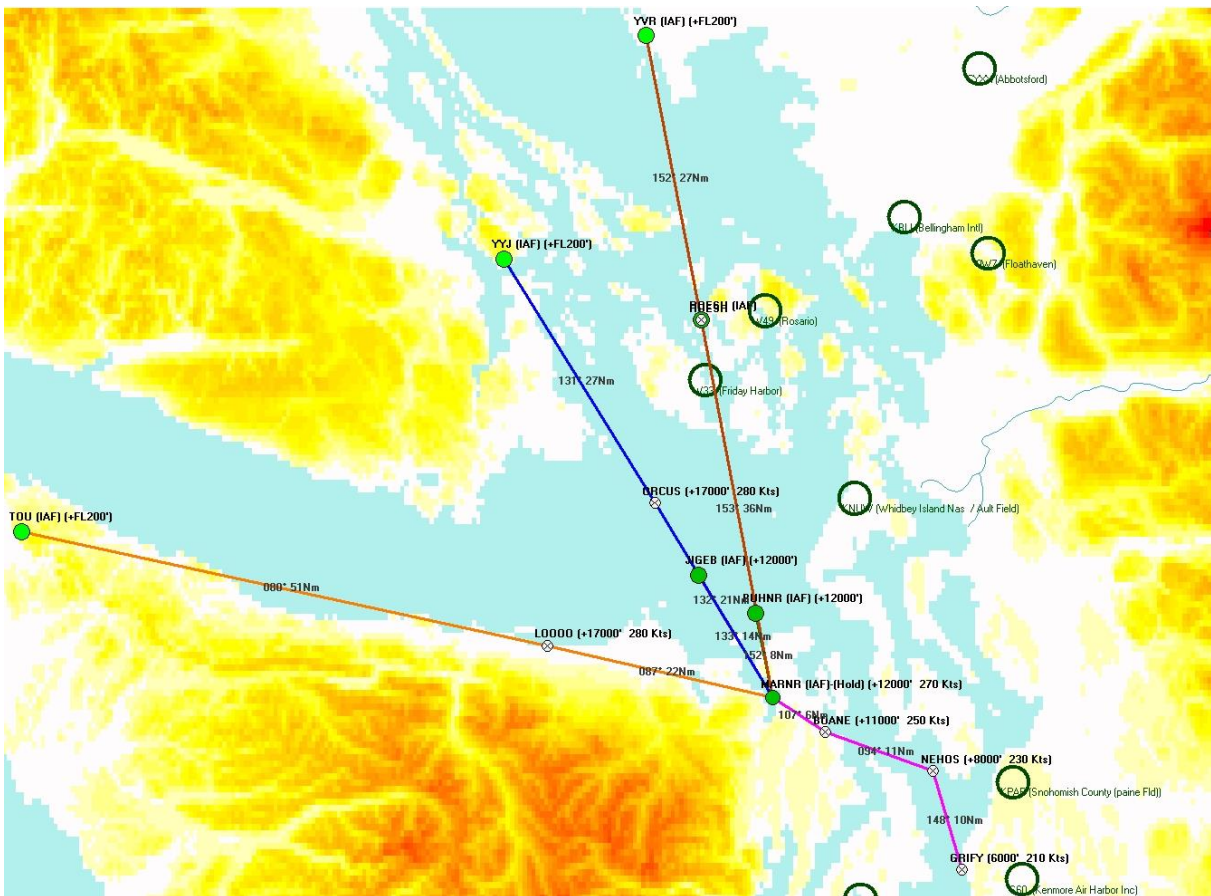
In the stars one can select MARNR7 and keep only the transitions to runways 16...

STAR - KSEA - MARNR7

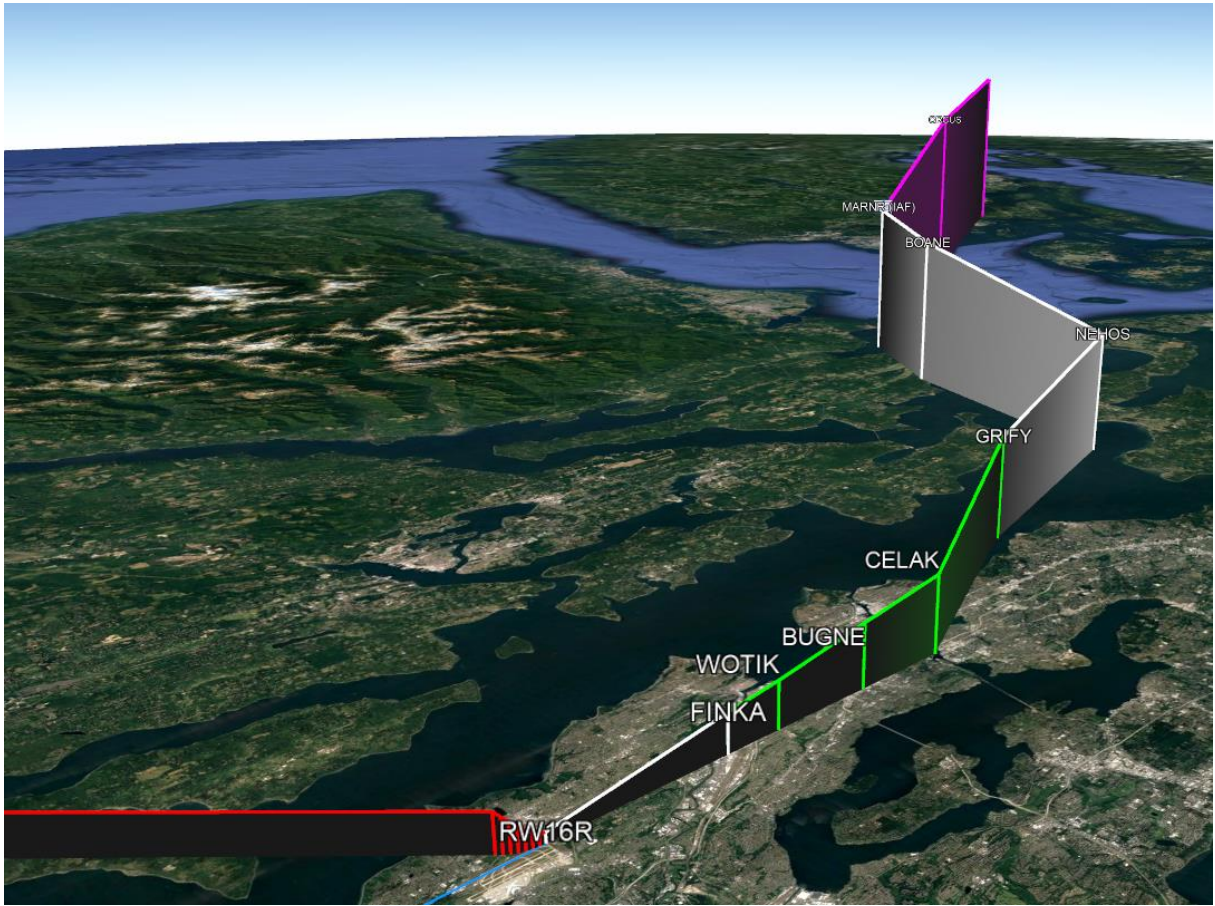
Seattle-tacoma Intl

Mag Var : 16.0° E (Apt)

Via	Seq	Pt	Fix	Typ	F/O	TD	Mag	Crs	Alt 1	Alt 2	Vert	Angle	RNP	Speed	Distance	Time	Rec	Navaid	Cycle	1808	Updte	
BUHNR	10	IF	BUHNR						+ 12000											R Enrt	T	1711
BUHNR	20	TF	MARNR	Holding					+ 12000					270 Kts						R Enrt	T	1711
JIGEB	10	IF	JIGEB						+ 12000											R Enrt	T	1711
JIGEB	20	TF	MARNR	Holding					+ 12000					270 Kts						R Enrt	T	1711
ROESH	10	IF	ROESH																	R Enrt	T	1711
ROESH	20	TF	MARNR	Holding					+ 12000					270 Kts						R Enrt	T	1711
TOU	10	IF	TOU						+ FL200											R Enrt	T	1711
TOU	20	TF	L0000						+ 17000					280 Kts						R Enrt	T	1711
TOU	30	TF	MARNR	Holding					+ 12000					270 Kts						R Enrt	T	1711
YVR	10	IF	YVR						+ FL200											R Enrt	T	1711
YVR	20	TF	ROESH																	R Enrt	T	1711
YVR	30	TF	MARNR	Holding					+ 12000					270 Kts						R Enrt	T	1711
YYJ	10	IF	YYJ						+ FL200											R Enrt	T	1711
YYJ	20	TF	ORCUS						+ 17000					280 Kts						R Enrt	T	1711
YYJ	30	TF	MARNR	Holding					+ 12000					270 Kts						R Enrt	T	1711
Rw16B	10	IF	MARNR	Holding					+ 12000					270 Kts						R Rwy	T	1711
Rw16B	20	TF	BOANE						+ 11000					250 Kts						R Rwy	T	1711
Rw16B	30	TF	NEHOS						+ 8000					230 Kts						R Rwy	T	1711
Rw16B	40	TF	GRIFY						6000					210 Kts						R Rwy	T	1711
Rw34B	10	IF	MARNR	Holding					+ 12000					270 Kts						R Rwy	T	1711
Rw34B	20	TF	PNELA						+ 12000					270 Kts						R Rwy	T	1711
Rw34B	30	TF	VEGGN					Btwn	15000	11000				250 Kts						R Rwy	T	1711
Rw34B	40	TF	UNITT						+ 10000					230 Kts						R Rwy	T	1711
Rw34B	50	TF	WUBET						+ 8000											R Rwy	T	1711
Rw34B	60	TF	SHIPZ						7000					210 Kts						R Rwy	T	1711
Rw34B	70	TF	EMMSS			FO														R Rwy	T	1711
Rw34B	80	FM	EMMSS					164.3°										SKA		R Rwy	T	1711



Selecting the via YYJ, and the same approach via GRIFY will plot this on google earth:



And so long...

Have fun !!!