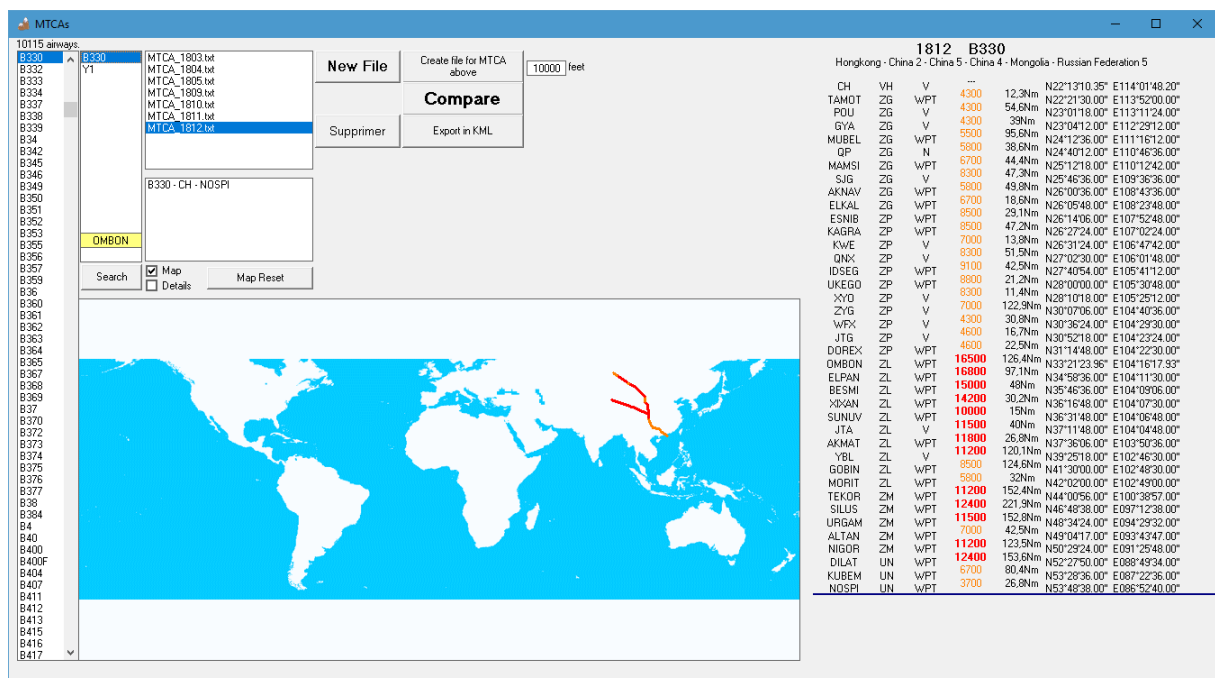
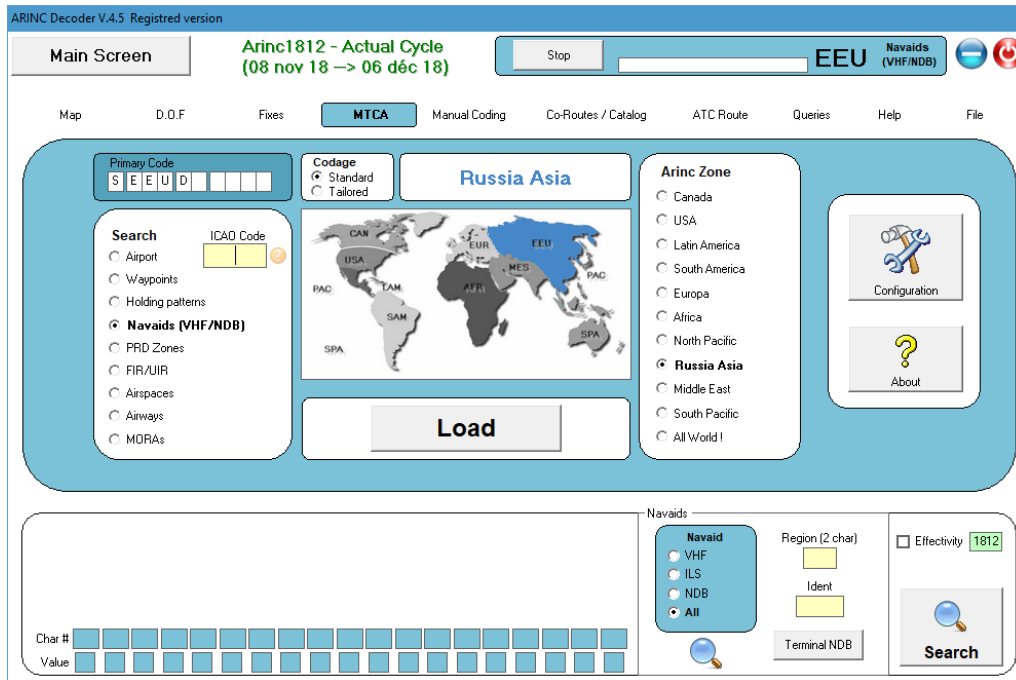
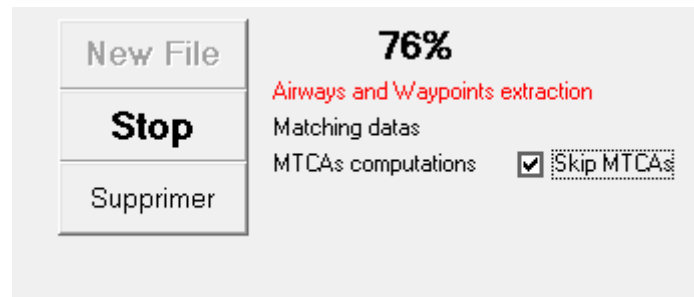


Creating a list of all waypoints and all airways of the world...

Click on "MTCA" button

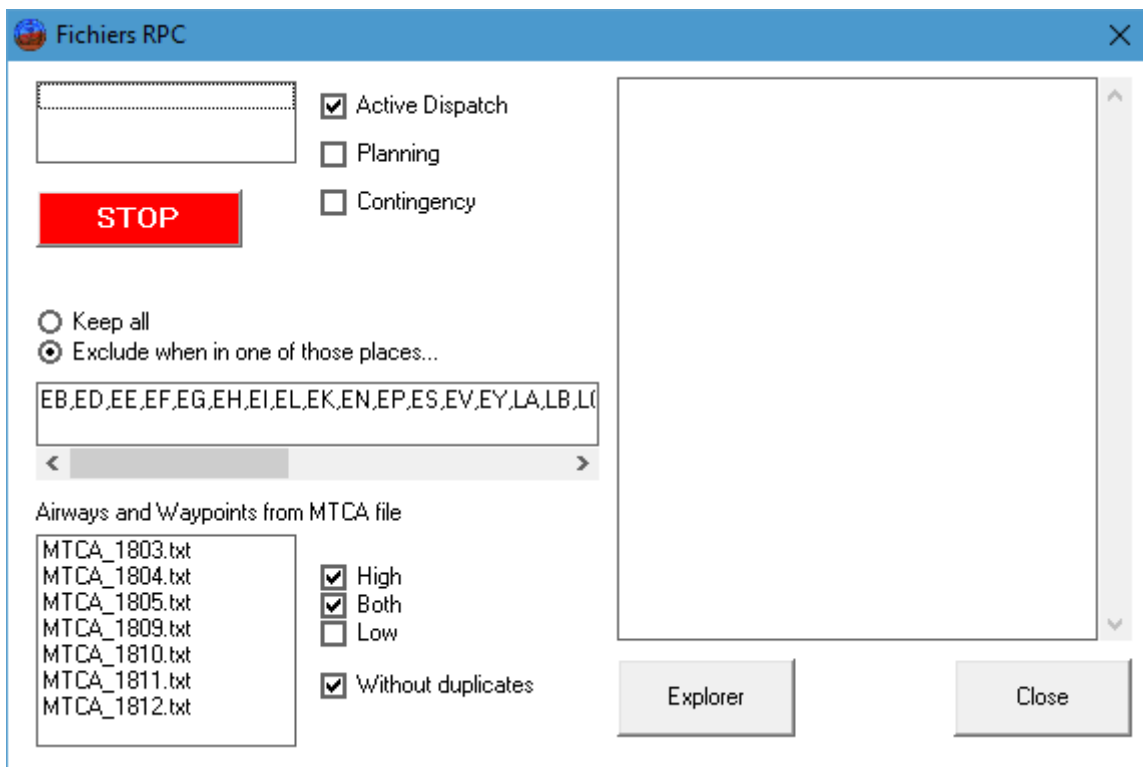


If your MTCA (minimum terrain clearance altitude) file is not done push on “New File” to do it, it’s not necessary to have the MTCAs (so you can select “Skip MTCA” to gain some time)



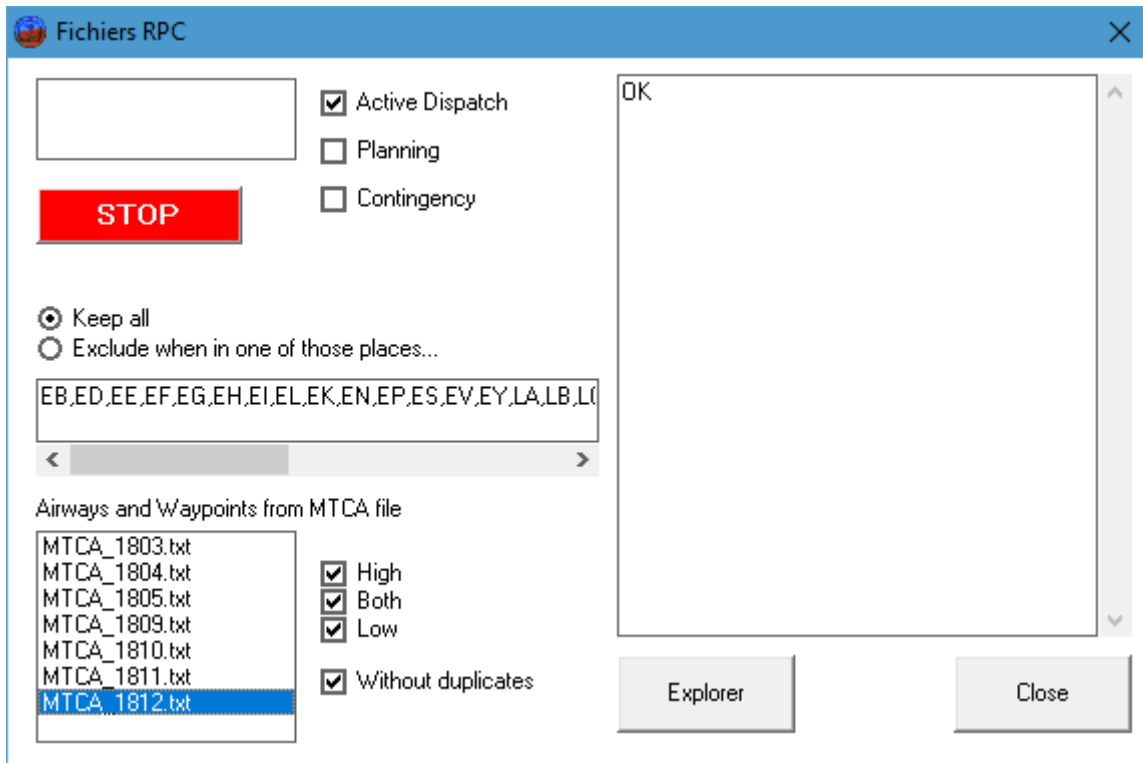
Press on the button “Export in KML”

New module...

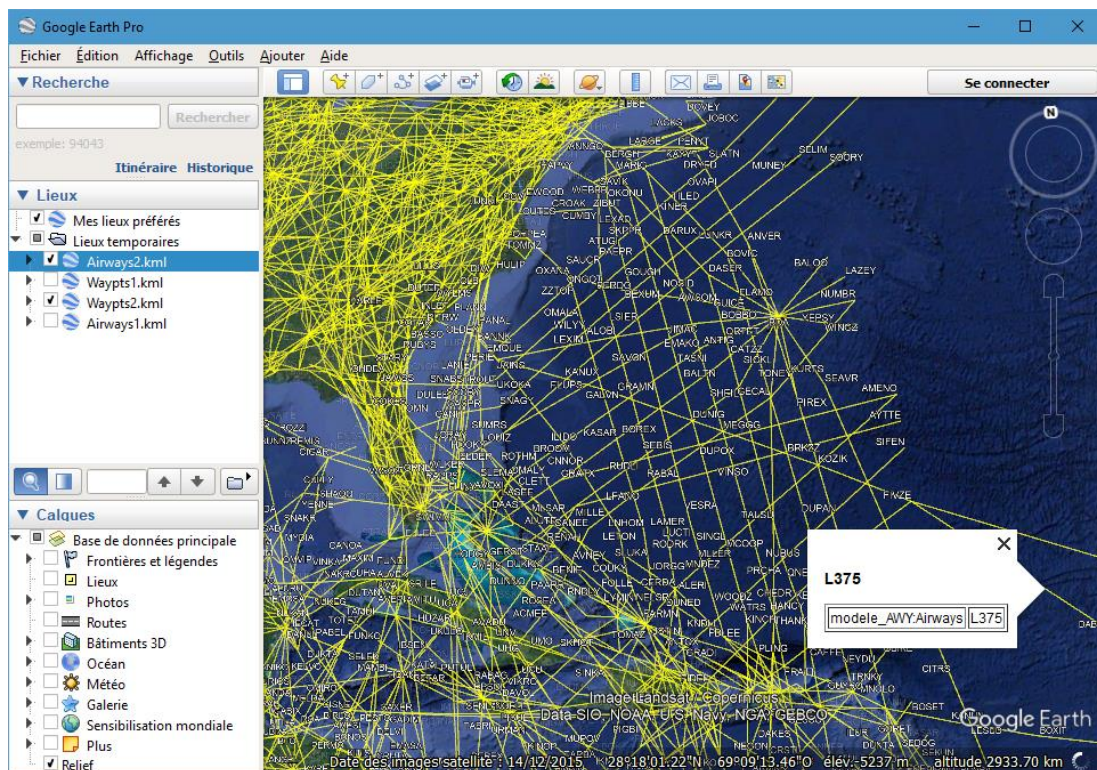


Click on the file you want to convert in KML...

When OK click on “Explorer” to find your 2 files:



Nom	Modifié le	Type	Taille
Airways1.kml	15/11/2018 12:16	KML	7 934 Ko
Waypts1.kml	15/11/2018 12:16	KML	12 974 Ko



If you create different files of other MTCA files, you can open all (in different colors) to make some comparisons...

