

Tuto 1:

Procedure Customization, start from an existing procedure.

You want to modify an approach, example, the RNAV GNSS 12 at FMEE

ARINC Decoder V.4.3 Registered version

Main Screen **Arinc1513 - Actual Cycle (10 déc 15 → 07 janv 16)** Stop 882 datas **AFR** Airport (FMEE)

Map D.O.F Fixes MTCA Manual Coding Co-Routes / Catalog ATC Route Queries Help

Import Export Save the list ☐ Of Selected Datas Un Select All Select All Reverse
CIs Select this List 18 data(s) Compare Display All Sort

FMEE - I14-V - ILS
FMEE - I14-W - ILS
FMEE - I14-X - ILS
FMEE - I14-Y - ILS
FMEE - I14-Z - ILS
FMEE - L14-V - Localizer (G/S inop)
FMEE - L14-W - Localizer (G/S inop)
FMEE - L14-X - Localizer (G/S inop)
FMEE - L14-Y - Localizer (G/S inop)
FMEE - L14-Z - Localizer (G/S inop)
FMEE - N14 - NDB
FMEE - R12 - RNAV RNP
FMEE - R14 - RNAV RNP
FMEE - R30 - RNAV RNP
FMEE - V14-X - VOR
FMEE - V14-Y - VOR
FMEE - V14-Z - VOR
FMEE - V30 - VOR

Group

ARINC Coding

Approaches Airport Procedure Via / Transition Published minima
FMEE R12 OKNER

Rec Navaid

Theta / Rho / Mag course T/D Alt Speed Angle RNP UpDate
010 IF OKNER 1308

Char # 13 7 8 9 10 14 15 16 Value F

Filter
☐ Airport
☐ Runways 4
☐ ILS ☐ Markers ☐ GLS
☐ Com freq 6 ☐ SBAS
☐ MSA ☐ Parkings 22
☐ Terminal Wpts 69
44 SIDs
24 STARs
18 Approaches All

Type App
All
☐ ILS ☐ GLS
☐ G/S inop
☐ VDR-DME
☐ VDR-TAC
☐ RNV-GPS
☐ RNV-RNP
☐ RNP (AR)
☐ NDB ☐ LDA
☐ NDB-DME
☐ Back CRS

☐ Effectivity 1513

248 results

Search

You open it...

Visualization

Approach - FMEE - R12

Via	Seq	Pt	Fix	Typ	F/D	Mag	Crs	Alt 1	Alt 2	Vert	Angle	RNP	Speed	Limit	Distance	Time	Rec	Navaid	Cycle :1513	Updte
OKNER	10	IF	OKNER	IAF								1	220 Kts		5,3 Nm				Transition	1308
OKNER	20	TF	TESOP	Holding			205,5°					1			3,5 Nm				Transition	1508
OKNER	30	TF	EE606				169,8°	+	3000			1							Transition	1508
OKTIB	10	IF	OKTIB	IAF								1	220 Kts		15,1 Nm				Transition	1308
OKTIB	20	TF	ERDIP				36,6°					1							Transition	1508
OKTIB	30	TF	EE606				99,3°	+	3000			1			6,1 Nm				Transition	1508
TESOP	20	IF	TESOP	IAF Hold															Transition	1308
TESOP	30	TF	EE606				169,8°	+	3000			1			3,5 Nm				Transition	1508
	10	IF	EE606	Inter AF				+	3000											1308
	20	TF	EE608	FAF			125,8°		3000		-3,30°	1			3,1 Nm					1508
	30	TF	RW12	MaPt	FD			88			-3,30°	0,3								1209
	40	DF	EE410	RdG	L			+	466			1	220 Kts							1211
	60	TF	OKNER				308,4°		3000			1	220 Kts		16 Nm					1509

Close


Page 1

Distances

Micro Station
← Swap →
Map

Coordinates

Changes
Compare
Export
Print
Options

 Visualization

— □ ✕

Approach - FMEE - R12

St Denis / La Reunion / Roland Gar

Mag Var : 19.0° W (Apt)
Cycle :1513
Update

Via	Seq	Pt	Fix	Typ	F/O	TD Mag Cts	Alt 1	Alt 2	Vert Angle	RNP	Speed Limit	Distance Time	Rec Navaid	Transition	Elevation
OKNER	10	IF	OKNER	IAF							220 Kts			Transition	1308
OKNER	20	TF	TESOP	Holding		205.5°				1		5.3 Nm		Transition	1508
OKNER	30	TF	EE606			169.8°	+	3000		1		3.5 Nm		Transition	1508
OKTIB	10	IF	OKTIB	IAF										Transition	1308
OKTIB	20	TF	ERDIP			36.6°				1	220 Kts	15.1 Nm		Transition	1508
OKTIB	30	TF	EE606			99.3°	+	3000		1		6.1 Nm		Transition	1508
TESOP	20	IF	TESOP	IAF Hold										Transition	1308
TESOP	30	TF	EE606			169.8°	+	3000		1		3.5 Nm		Transition	1508
	10	IF	EE606	Inter AF			+	3000							1308
	20	TF	EE608	FAF		125.8°		3000	-3.30°	1		3.1 Nm			1508
	30	TF	Rw12	MaPt	FD			88	-3.30°	0.3					1209
	40	DF	EE410	RdG	L		+	466		1	220 Kts				1211
	60	TF	OKNER			308.4°		3000		1	220 Kts	16 Nm			1509

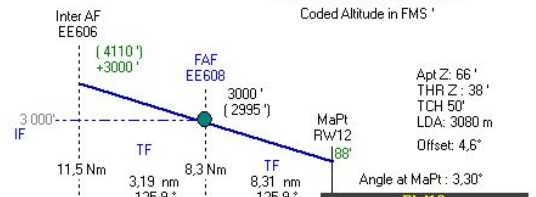
Approach - FMEE - R12 Cycle :1513

Rw12
S20.53.2
E055.30.3

Threshold

9	8	7	6	5	4	3	2	1
3240	2890	2540	2190	1840	1490	1140	790	440

D-Point: 8,3 Nm from THR (Intercept at 3000')
 (Computed Altitude from MaPt ')
 Coded Altitude in FMS '



Apt Z: 66°
 THR Z: 38°
 TCH 50°
 LDA: 3080 m
 Offset: 4,6°
RW12

ArrivDecoder

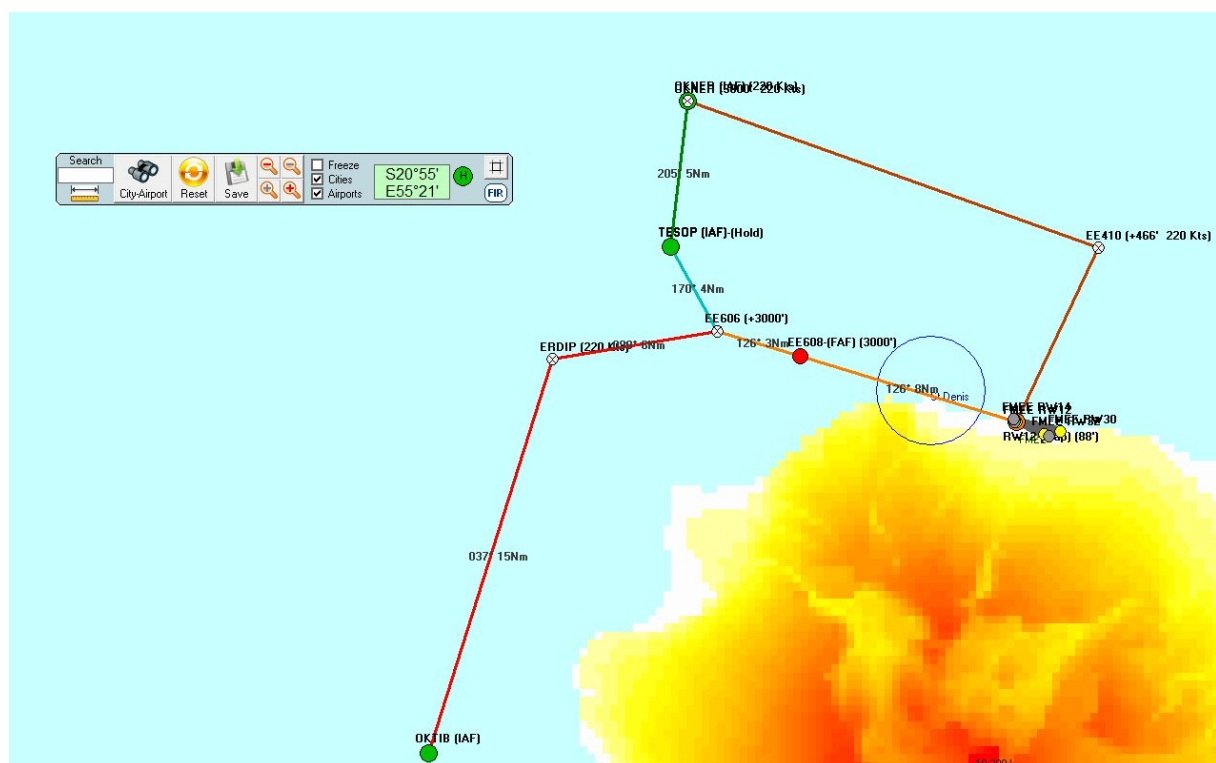
Close

Page 1

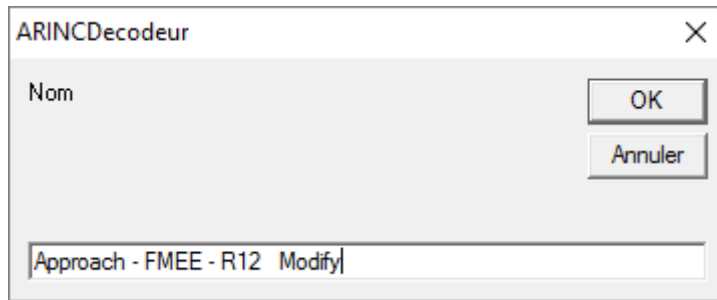
Distances

Micro Station
← Swap →
Map

Coordinates
Runways
M.T.C.A
Changes
Compare
Save Export
Print -
Options



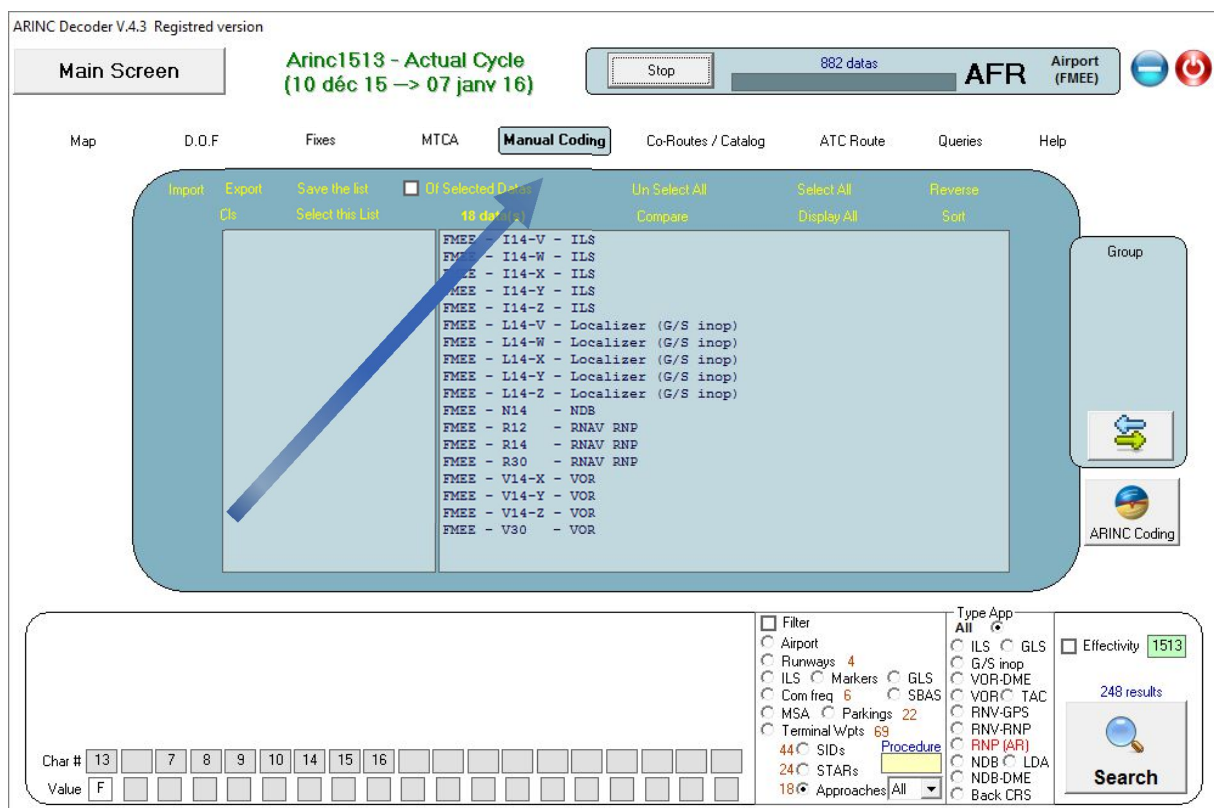
Then on « Save » to extract all the coding and the coordinates of the fixes of this procedure.



A small dialog box titled "ARINCDecodeur" with a close button (X) in the top right corner. It contains a text field labeled "Nom" with the text "Approach - FMEE - R12 Modify" entered. Below the text field are two buttons: "OK" and "Annuler".

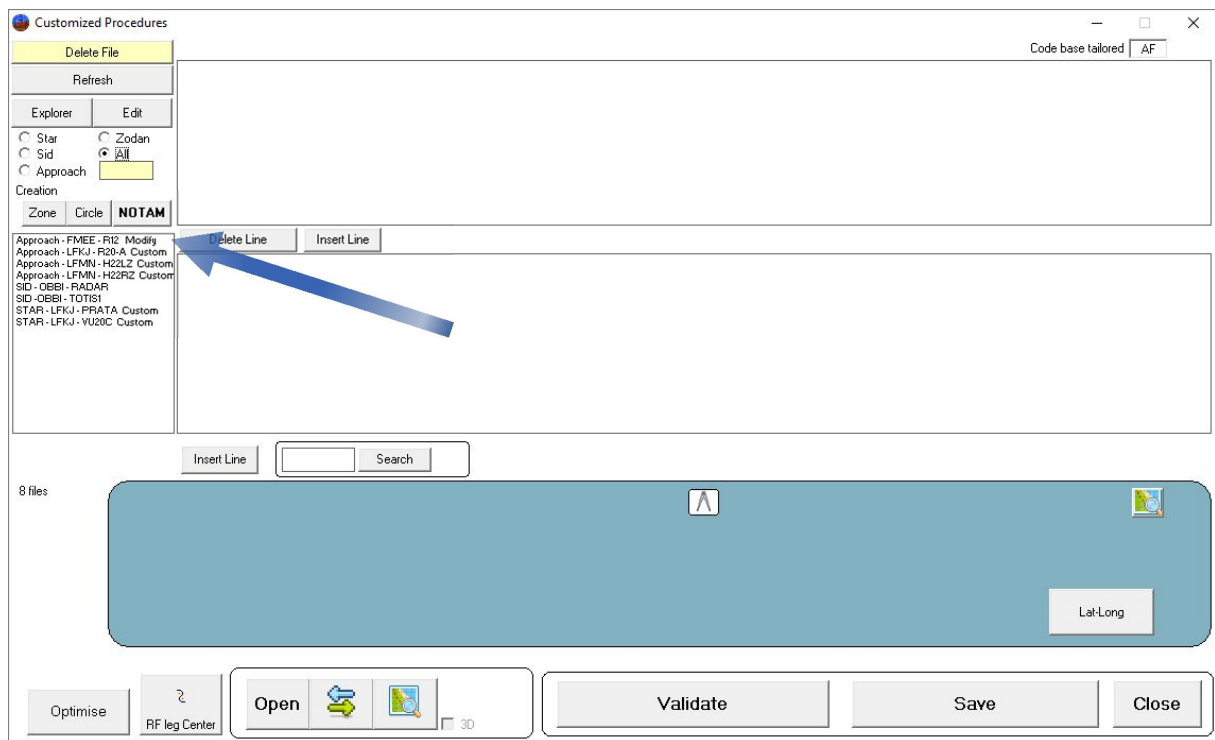
You give a name.

On the main screen you press on “Manual coding”

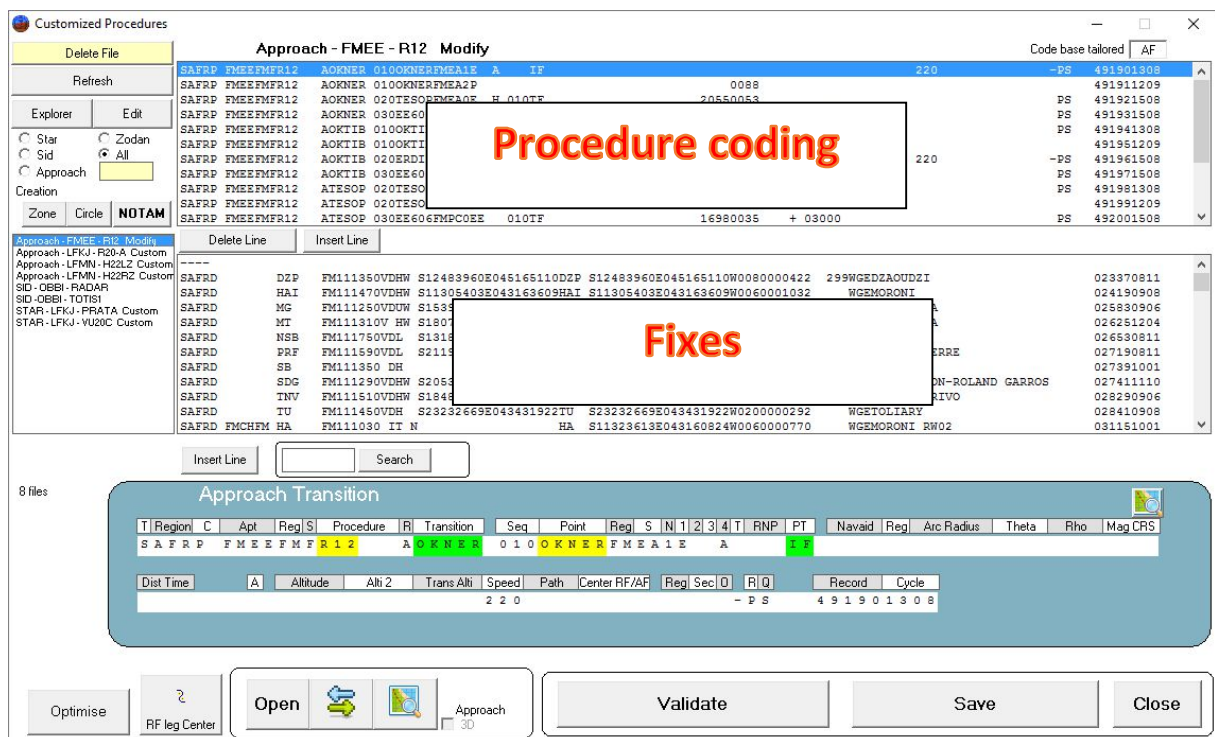


The main screen of the ARINC Decoder V.4.3 software. The title bar says "ARINC Decoder V.4.3 Registered version". The main menu includes "Main Screen", "Map", "D.O.F", "Fixes", "MTCA", "Manual Coding" (highlighted), "Co-Routes / Catalog", "ATC Route", "Queries", and "Help". The "Manual Coding" section shows a list of procedures for FMEE, including ILS, Localizer, NDB, RNAV RNP, and VOR. A blue arrow points to the "Manual Coding" button. The bottom section contains a "Filter" panel with checkboxes for various data types (Airport, Runways, ILS, etc.) and a "Type App" panel with checkboxes for various application types (ILS, G/S inop, VDR-DME, etc.). A "Search" button is visible in the bottom right corner.

You find and select your procedure... (it can be a star, SID, Approache or zone PRD(Zodan))



All the coding is available at the top and in the bottom list, all the fixes available in the area



If you modify anything, it won't change anything in the master file, but in this new "*.cus" file.

Example, I remove all the transitions exept transition OKTIB:

Customized Procedures

Approach - FMEE - R12 Modify

Code base tailored AF

Delete File

Refresh

Explorer Edit

Star Sid Approach

Creation Zone Circle NOTAM

Delete Line Insert Line

8 files

Final Approach

T Region C Apt Reg S Procedure R Transition Seq Point Reg S N 1 2 3 4 T RNP PT Navaid Reg Arc Radius Theta Rho Mag CRS

Dist Time A Altitude Alt 2 Trans Alt Speed Path Center RF/AF Reg Sec 0 R/Q Record Cycle

Optimise RF leg Center Open Approach 3D Validate Save Close

And easily I change 330 to 300 under the "Path" field.

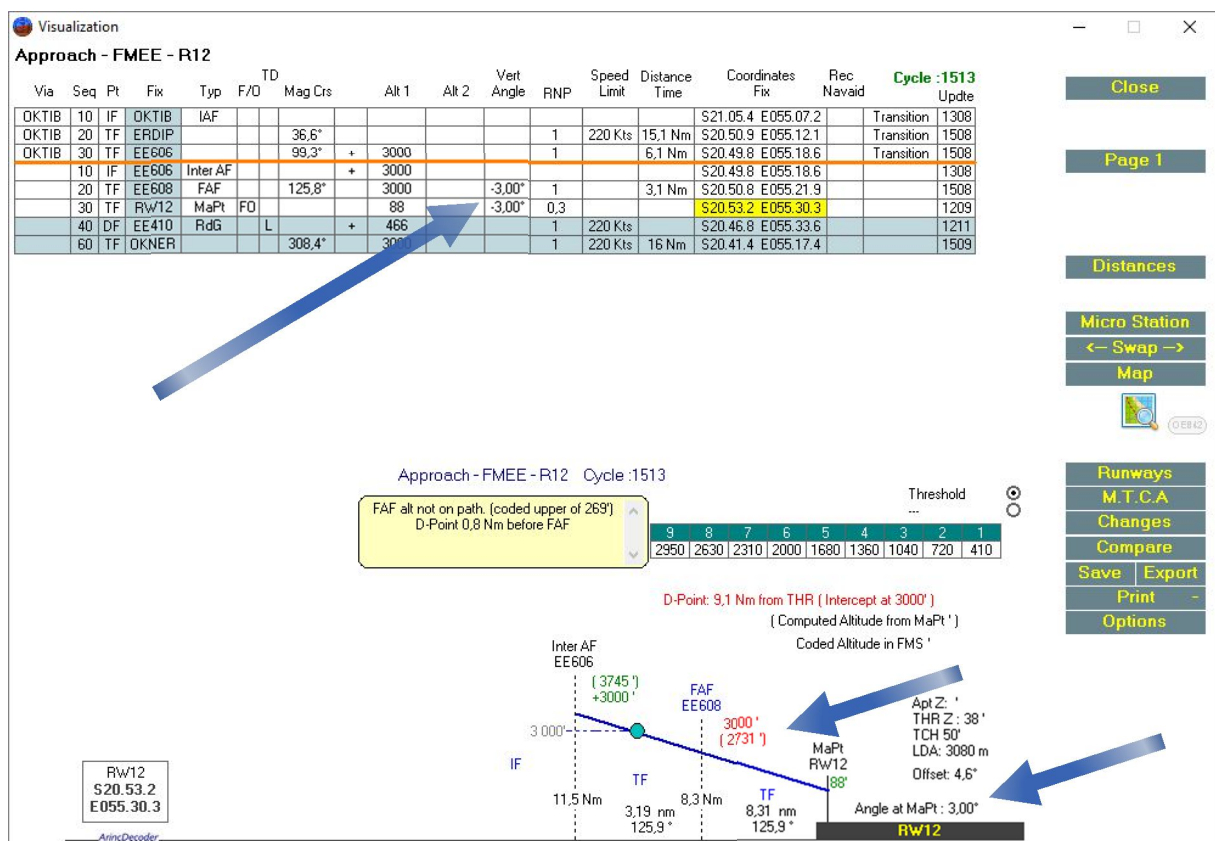
Final Approach

T Region C Apt Reg S Procedure R Transition Seq Point Reg S N 1 2 3 4 T RNP PT Navaid Reg Arc Radius Theta Rho Mag CRS

Dist Time A Altitude Alt 2 Trans Alt Speed Path Center RF/AF Reg Sec 0 R/Q Record Cycle

I validate then Save.

I do the same at the FAF (to have the same path on the final) and I can plot my new procedure...



Where now we see that the coding is not anymore consistent... the FAF is coded at 3000' and with the new path we should be at 2730'... we can recode the level altitude at 2750'...

FAF line...

Customized Procedures

Approach - FMEE - R12 Modify

Code base tailored AF

SAFRP FMEEFMFR12 AOKTIB 0100KTIBFMEA1E A IF PS 491941308

SAFRP FMEEFMFR12 AOKTIB 0100KTIBFMEA2P PS 491961209

SAFRP FMEEFMFR12 AOKTIB 020ERDIPFMEA0E 010TF 03660151 220 -PS 491961508

SAFRP FMEEFMFR12 AOKTIB 030EE606FMPCOEE 010TF 09993061 + 03000 B PS 491971508

SAFRP FMEEFMFR12 R 010EE606FMPCE1E B IF 0191 + 03000 B PS 492011308

SAFRP FMEEFMFR12 R 010EE606FMPCE2P 0191 03000 -300 B PS 492021209

SAFRP FMEEFMFR12 R 020EE608FMPCOEE F 010TF 12580031 03000 -300 B PS 492031508

SAFRP FMEEFMFR12 R 030RW12 FMPGGY M 031TF 00088 -300 B PS 492041209

SAFRP FMEEFMFR12 R 040EE410FMPCOE M L010DF + 00466 220 B-PS 492051211

SAFRP FMEEFMFR12 R 0600KNERFMEA0EE 010TF 30840160 03000 220 B-PS 492061509

Delete Line Insert Line

SAFRD DZP FM111350VDHW S12483960E045165110DZP S12483960E045165110W00800000422 299WGEDZAOUDZI 023370811

SAFRD HAI FM111470VDHW S11305403E043163609HAI S11305403E043163609W0060001032 WGEORONI 024190908

SAFRD MG FM111250VDHW S15392700E046202640MG S15392700E046202640W0110000522 WGEORONI 025830906

SAFRD MT FM111310V HW S18072730E049239930 W0150 2 WGEORONI 026251204

SAFRD NSB FM111750VDL S13182000E04819239NSB S13182000E04819239W0090000371 000WGENOSY-BE 026530811

SAFRD PRF FM111590VDL S21191123E055251311PRF S21191123E055251311W0190000521 000WGESAIN PIERRE 027190811

SAFRD SB FM111350 DH SB S14164210E050103620W0110000202 299WGESAIN PIERRE 027391001

SAFRD SDG FM111290VDHW S20530540E05303530SDG S20530540E05303530W0190000572 WGEORONI 027411110

SAFRD TNV FM111510VDHW S18481200E047310720TNV S18481200E047310720W0150041522 WGEANTANANARIVO 028290906

SAFRD TU FM111450VDH S23232669E043431922TU S23232669E043431922W0200000292 WGEORONI 028410908

SAFRD FMCHFM HA FM111030 IT N HA S11323613E043160824W0060000770 WGEORONI RW02 031151001

Insert Line Search

8 files

Final Approach

T Region C Apt Reg S Procedure R Transition Seq Point Reg S N I 2 3 4 T RNP PT Navaid Reg Arc Radius Theta Rho Mag CRS

S A F R P F M E E F M F R 1 2 R 0 2 0 E E 6 0 8 F M P C O E F 0 1 0 3 5

Dist Time A Altitude Alt 2 Trans Alt Speed Path Center RF/AF Reg Sec 0 R Q Record Cycle

0 0 3 1 0 3 0 0 0 - 3 0 0 B P S 4 9 2 0 3 1 5 0 8

Optimise RF leg Center Open AFR Approach 30 Validate Save Close

And I change the Altitude field, from 3000 to 2750...

Customized Procedures

Approach - FMEE - R12 Modify

Code base tailored AF

SAFRP FMEEFMFR12 AOKTIB 0100KTIBFMEA1E A IF PS 491941308

SAFRP FMEEFMFR12 AOKTIB 0100KTIBFMEA2P PS 491961209

SAFRP FMEEFMFR12 AOKTIB 020ERDIPFMEA0E 010TF 03660151 220 -PS 491961508

SAFRP FMEEFMFR12 AOKTIB 030EE606FMPCOEE 010TF 09993061 + 03000 B PS 491971508

SAFRP FMEEFMFR12 R 010EE606FMPCE1E B IF 0191 + 03000 B PS 492011308

SAFRP FMEEFMFR12 R 010EE606FMPCE2P 0191 03000 -300 B PS 492021209

SAFRP FMEEFMFR12 R 020EE608FMPCOEE F 010TF 12580031 03000 -300 B PS 492031508

SAFRP FMEEFMFR12 R 030RW12 FMPGGY M 031TF 00088 -300 B PS 492041209

SAFRP FMEEFMFR12 R 040EE410FMPCOE M L010DF + 00466 220 B-PS 492051211

SAFRP FMEEFMFR12 R 0600KNERFMEA0EE 010TF 30840160 03000 220 B-PS 492061509

Delete Line Insert Line

SAFRD DZP FM111350VDHW S12483960E045165110DZP S12483960E045165110W00800000422 299WGEDZAOUDZI 023370811

SAFRD HAI FM111470VDHW S11305403E043163609HAI S11305403E043163609W0060001032 WGEORONI 024190908

SAFRD MG FM111250VDHW S15392700E046202640MG S15392700E046202640W0110000522 WGEORONI 025830906

SAFRD MT FM111310V HW S18072730E049239930 W0150 2 WGEORONI 026251204

SAFRD NSB FM111750VDL S13182000E04819239NSB S13182000E04819239W0090000371 000WGENOSY-BE 026530811

SAFRD PRF FM111590VDL S21191123E055251311PRF S21191123E055251311W0190000521 000WGESAIN PIERRE 027190811

SAFRD SB FM111350 DH SB S14164210E050103620W0110000202 299WGESAIN PIERRE 027391001

SAFRD SDG FM111290VDHW S20530540E05303530SDG S20530540E05303530W0190000572 WGEORONI 027411110

SAFRD TNV FM111510VDHW S18481200E047310720TNV S18481200E047310720W0150041522 WGEANTANANARIVO 028290906

SAFRD TU FM111450VDH S23232669E043431922TU S23232669E043431922W0200000292 WGEORONI 028410908

SAFRD FMCHFM HA FM111030 IT N HA S11323613E043160824W0060000770 WGEORONI RW02 031151001

Insert Line Search

8 files

Final Approach

T Region C Apt Reg S Procedure R Transition Seq Point Reg S N I 2 3 4 T RNP PT Navaid Reg Arc Radius Theta Rho Mag CRS

S A F R P F M E E F M F R 1 2 R 0 2 0 E E 6 0 8 F M P C O E F 0 1 0 3 5

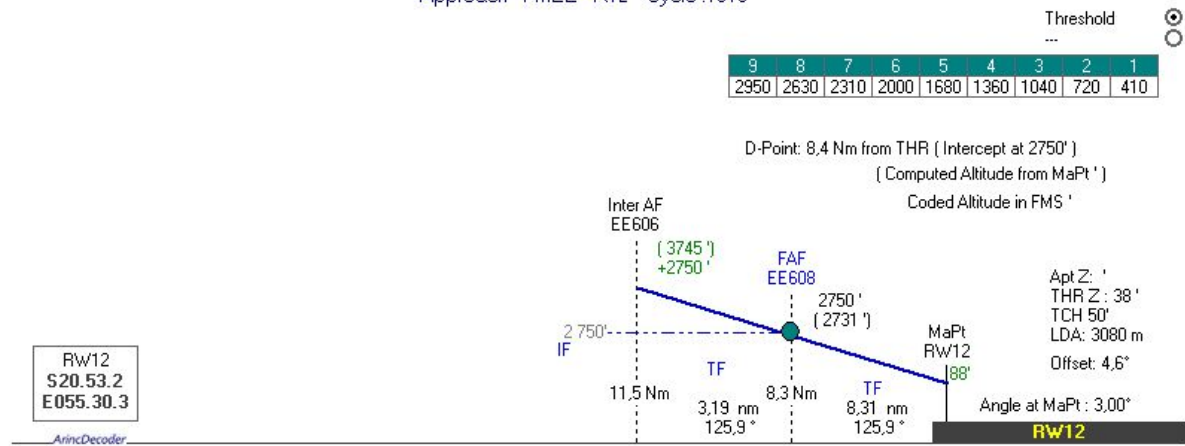
Dist Time A Altitude Alt 2 Trans Alt Speed Path Center RF/AF Reg Sec 0 R Q Record Cycle

0 0 3 1 0 2 7 5 0 - 3 0 0 B P S 4 9 2 0 3 1 5 0 8

Optimise RF leg Center Open AFR Approach 30 Validate Save Close

Same at the IAF lines and all is now nominal...

Approach - FMEE - R12 Cycle :1513



If you want the coding in the A424 format, just open your file with a text editor with the edit button:

```
PSM - [C:\Program Files\ArincDecoder\Approach - FMEE - R12 Modify.txt]
Fichier  Projects  Edition  Recherche  Affichage  Format  Outils  Options  Fenêtre  Aide
L: Approach - FMEE - R12  Modify.txt
Nouveau projet  Répertoire
1 2 3 4 5 6 7 8 9 10 11 12 13 14 15 16 17 18 19 20 21 22 23 24 25 26 27 28 29 30 31 32 33 34 35 36 37 38 39 40 41 42 43 44 45 46 47 48 49 50 51 52 53 54 55 56 57 58 59 60 61 62 63 64 65 66 67 68 69 70 71 72 73 74 75 76 77 78 79 80 81 82 83 84 85 86 87 88 89 90 91 92 93 94 95 96 97 98 99 100 101 102 103 104 105 106 107 108 109 110 111 112 113 114 115 116 117 118 119 120 121 122 123 124 125 126 127 128 129 130 131 132 133 134 135 136 137 138 139 140 141 142 143 144 145 146 147 148 149 150 151 152 153 154 155 156 157 158 159 160 161 162 163 164 165 166 167 168 169 170 171 172 173 174 175 176 177 178 179 180 181 182 183 184 185 186 187 188 189 190 191 192 193 194 195 196 197 198 199 200 201 202 203 204 205 206 207 208 209 210 211 212 213 214 215 216 217 218 219 220 221 222 223 224 225 226 227 228 229 230 231 232 233 234 235 236 237 238 239 240 241 242 243 244 245 246 247 248 249 250 251 252 253 254 255 256 257 258 259 260 261 262 263 264 265 266 267 268 269 270 271 272 273 274 275 276 277 278 279 280 281 282 283 284 285 286 287 288 289 290 291 292 293 294 295 296 297 298 299 300 301 302 303 304 305 306 307 308 309 310 311 312 313 314 315 316 317 318 319 320 321 322 323 324 325 326 327 328 329 330 331 332 333 334 335 336 337 338 339 340 341 342 343 344 345 346 347 348 349 350 351 352 353 354 355 356 357 358 359 360 361 362 363 364 365 366 367 368 369 370 371 372 373 374 375 376 377 378 379 380 381 382 383 384 385 386 387 388 389 390 391 392 393 394 395 396 397 398 399 400 401 402 403 404 405 406 407 408 409 410 411 412 413 414 415 416 417 418 419 420 421 422 423 424 425 426 427 428 429 430 431 432 433 434 435 436 437 438 439 440 441 442 443 444 445 446 447 448 449 450 451 452 453 454 455 456 457 458 459 460 461 462 463 464 465 466 467 468 469 470 471 472 473 474 475 476 477 478 479 480 481 482 483 484 485 486 487 488 489 490 491 492 493 494 495 496 497 498 499 500 501 502 503 504 505 506 507 508 509 510 511 512 513 514 515 516 517 518 519 520 521 522 523 524 525 526 527 528 529 530 531 532 533 534 535 536 537 538 539 540 541 542 543 544 545 546 547 548 549 550 551 552 553 554 555 556 557 558 559 560 561 562 563 564 565 566 567 568 569 570 571 572 573 574 575 576 577 578 579 580 581 582 583 584 585 586 587 588 589 590 591 592 593 594 595 596 597 598 599 600 601 602 603 604 605 606 607 608 609 610 611 612 613 614 615 616 617 618 619 620 621 622 623 624 625 626 627 628 629 630 631 632 633 634 635 636 637 638 639 640 641 642 643 644 645 646 647 648 649 650 651 652 653 654 655 656 657 658 659 660 661 662 663 664 665 666 667 668 669 670 671 672 673 674 675 676 677 678 679 680 681 682 683 684 685 686 687 688 689 690 691 692 693 694 695 696 697 698 699 700 701 702 703 704 705 706 707 708 709 710 711 712 713 714 715 716 717 718 719 720 721 722 723 724 725 726 727 728 729 730 731 732 733 734 735 736 737 738 739 740 741 742 743 744 745 746 747 748 749 750 751 752 753 754 755 756 757 758 759 760 761 762 763 764 765 766 767 768 769 770 771 772 773 774 775 776 777 778 779 780 781 782 783 784 785 786 787 788 789 790 791 792 793 794 795 796 797 798 799 800 801 802 803 804 805 806 807 808 809 810 811 812 813 814 815 816 817 818 819 820 821 822 823 824 825 826 827 828 829 830 831 832 833 834 835 836 837 838 839 840 841 842 843 844 845 846 847 848 849 850 851 852 853 854 855 856 857 858 859 860 861 862 863 864 865 866 867 868 869 870 871 872 873 874 875 876 877 878 879 880 881 882 883 884 885 886 887 888 889 890 891 892 893 894 895 896 897 898 899 900 901 902 903 904 905 906 907 908 909 910 911 912 913 914 915 916 917 918 919 920 921 922 923 924 925 926 927 928 929 930 931 932 933 934 935 936 937 938 939 940 941 942 943 944 945 946 947 948 949 950 951 952 953 954 955 956 957 958 959 960 961 962 963 964 965 966 967 968 969 970 971 972 973 974 975 976 977 978 979 980 981 982 983 984 985 986 987 988 989 990 991 992 993 994 995 996 997 998 999 1000
SAFRP FMEEFMR12 AORTIB 010ORTIBMALE A IF 0212 PS 491941308
SAFRP FMEEFMR12 AORTIB 010ORTIBHEADP 0212 PS 491941209
SAFRP FMEEFMR12 AORTIB 010ORTIBHEADP 010TF 03640131 -PS 491941308
SAFRP FMEEFMR12 AORTIB 010ORTIBHEADP 010TF 09930061 + 02750 PS 491971508
SAFRP FMEEFMR12 R 010ORTIBHEADP B IF 0191 B PS 492011308
SAFRP FMEEFMR12 R 010ORTIBHEADP F 010TF 12580031 02750 -300 B PS 492031508
SAFRP FMEEFMR12 R 030RMI2 PM000TF M 010TF 00088 -300 B PS 492041209
SAFRP FMEEFMR12 R 040RMI2 PM000TF M 010TF 00466 + 00466 B-PS 492051211
SAFRP FMEEFMR12 R 040RMI2 PM000TF M 010TF 03000 220 B-PS 492061509
SAFRP DDP FM111350VDMH S12483960E045165110DZP S12483960E045165110W00800000422 299WGEDZAOUEI 023370811
SAFRP HAI FM11470VDMH S11305403E043163609RAI S11305403E043163609W0060001032 WGEHOROTI 024190908
SAFRP HG FM111230VDMH S1332700E046202440HG S1332700E046202440W0110000522 WGEHARANGA 028830906
SAFRP HT FM111310V HM S14077700E0492323930 W0150 2 WGETOMASINA 026231204
SAFRP USB FM111750VDM S13122000E045192390USB S13122000E045192390W00900000371 00WGEHOSY-BE 026530811
SAFRP PRF FM111590VDM S21191123E055251311PRF S21191123E055251311W01900000521 00WGESAINY PIERRE 027190811
SAFRP SB FM111350 DE SB S1454621E050133620W01100000202 299WGESAINY 027380001
SAFRP SDG FM111290VDMH S20330540E05530330SDG S20330540E05530330W0190000572 WGEIA REUNION-ROLAND GARROS 027411110
SAFRP TIV FM111510VDMH S19481200E047310720TIV S19481200E047310720W0150061522 WGEANTANARIYO 028290906
SAFRP TIJ FM111450VDMH S2023236E04545192TIJ S2023236E04545192W02000000292 WGETOLLARY 028410908
SAFRP TII FM111030 IT HA S11323613E043160824W0060000770 WGEHOROTI RW02 031151001
SAFRP FMEEFMR12 SD FM111030 IT HA SD S20330540E05530330W0190000460 WGEIA REUNION-ROLAND GARROS RW14 031171110
SAFRP FMEEFMR12 TO FM110950 IT W TO S14847470E04728044W0150041870 WGEANTANARIYO RW11 031160811
SAFRP FMEEFMR12 TO FM111030 IT W TO S18060790E04923347W01500000220 WGETOMASINA RW19 031211509
SAFRP FMEEFMR12 DI FM111210 DI DI S1220577E04917420W009000003740 WGEANTIRAHANA 031230908
SAFRP FMEEFMR12 FDM FM111330 DI FDM S200154E04917110W02300000260 WGETOLAHANO 031250811
SAFRD AH FM103210M M S1459861E050190450 W0120 WGEANTALANA 033031108
SAFRD AJ FM103690M M S12075530E04454291 W0070 WGEANTJUAN 033071401
SAFRD AT FM103740M L S1454105E047589450 W0110 WGEANTGHEITY 033071513
SAFRD DO FM103900M M S12204680E049172200 W0090 WGEANTIRAHANA 033090811
SAFRD FG FM102430M M S02248000E047500000 W0179 WGEFARAFANGANA 035550811
SAFRD FJO FM103410M S12488487E045164910 W0080 WGEDZAOUEI 035610911
SAFRD FXE FM103520M S02220000E040210000 W0150 WGEUROPA 035770811
SAFRD FXR FM103820M S20333390E055313430 W0190 WGEIA REUNION-ROLAND GARROS 035781110
SAFRD FXZ FM103350M S011330000E047170000 W0046 WGEORANKE ELORIESE 035810811
SAFRD IA FM103640M M S1847361E04721770 W0150 WGEANTANARIYO LHM RW11 036550811
SAFRD IO FM103050M M S18470270E047233440 W0150 WGEANTANARIYO LHM RW11 036770811
SAFRD MA FM102850M S14540084E046221140 W0110 WGEHARANGA 036811508
SAFRD MJ FM103760M L S21122778E048212499 W0180 WGEHARAJARY 039071008
SAFRD NMY FM102470M S01481700E049015500 W0137 WGEHARAHARY 039170811
SAFRD MY FM103810M L S14052390E049232590 W0150 WGETOMASINA 039680811
SAFRD NT FM103700M M S14885630E047361630 W0150 WGEANTANARIYO 040030811
SAFRD SA FM103760M S14164330E050103790 W0110 WGESAINY 041631308
SAFRD SM FM102800M L S17052800E049465290 W0140 WGESAINY-IGARE 042130811
SAFRD SP FM103520M S21143912E055214406 W0190 WGESAINY PIERRE 042350811
SAFRD TAN FM102760M S18500480E047281930 W0150 WGEANTANETRE 042670811
SAFRD TF FM103710M S0158701E046133250 W0135 WGEHARANGA 042610811
SAFRD TN FM103850M S18185780E047064960 W0140 WGEANKAZORE 043110811
SAFRD TO FM103940M L S18022450E049230390 W0150 WGETOMASINA 043190811
SAFRD TW FM103500M S011010000E044460700 W0136 WGESANTIRAHANA 043790811
SAFRD VSF FM103220M S211262000E047064000 W0180 WGEFANARANTSOA 044010811
```

By default, all the fixes of the area still available, but when you're sure you won't add a new fix, you can only keep those used in your procedure, with the button "Optimize".

Customized Procedures

Approach - FMEE - R12 Modify

Code base tailored AF

Delete File

Refresh

Explorer Edit

Star Sid Approach

Creation

Zone Circle NOTAM

Delete Line Insert Line

Insert Line Search

8 files

Approach Transition

T Region C Apt Reg S Procedure R Transition Seq Point Reg S N1 2 3 4 T RNP PT Navaid Reg Arc Radius Theta Rho Mag CRS

Dist Time A Altitude Alt 2 Trans Alt Speed Path Center RF/AF Reg Sec D R Q Record Cycle

Optimise RF leg Center Open Approach Validate Save Close

0	10	20	30	40	50	60	70	80	90	100	110	120	130
SAFRP FMEEFMFR12	AOKTIB	010OKTIBFMEA1E	A	IF								PS	491941308
SAFRP FMEEFMFR12	AOKTIB	010OKTIBFMEA2P				0212							491951209
SAFRP FMEEFMFR12	AOKTIB	020ERDIPFMEA0E	010TF		03660151			220		-PS			491961508
SAFRP FMEEFMFR12	AOKTIB	030EE606FMPC0EE	010TF		09930061	+ 02750				PS			491971508
SAFRP FMEEFMFR12	R	010EE606FMPC1E	B	IF		+ 02750				B PS			492011308
SAFRP FMEEFMFR12	R	010EE606FMPC2P				0191							492021209
SAFRP FMEEFMFR12	R	020EE608FMPC0E	F	010TF	12580031	02750		-300		B PS			492031508
SAFRP FMEEFMFR12	R	030RW12 FMPC0GY	M	031TF		00088		-300		B PS			492041209
SAFRP FMEEFMFR12	R	040EE410FMPC0E	M	L010DF		+ 00466		220		B-PS			492051211
SAFRP FMEEFMFR12	R	060OKNERFMEA0EE	010TF		30840160	03000		220		B-PS			492061509
SAFREANRT	ERDIP	FM1	WIF	S20505210E055120620		W0191	WGE	P	ERDIP			072871011	
SAFREANRT	OKNER	FM1	WIZ	S20412190E055172440		W0189	WGE	P	OKNER			104931011	
SAFREANRT	OKTIB	FM1	WDZ	S21052200E055071260		W0196	WGE	P	OKTIB			105471011	
SAFRP FMEEFMCEE410	FM1	W F	S20464590E055333500		W0190	WGE	P	EE410				484521011	
SAFRP FMEEFMCEE606	FM1	WDF	S20494970E055183560		W0190	WGE	P	EE606				484581209	
SAFRP FMEEFMCEE608	FM1	WAF	S20504550E055215120		W0190	WGE	P	EE608				484601209	
SAFRP FMEEFMGRW12	1104991210	S20531039E055302076			00038039450148	0000			CONC/ASPH081FBWT			492781505	
SAFRP FMEEFMGRW14	1087601350	S20530464E055301808			00027032861148	SD 10000			CONC/ASPH065FBWT			492791505	
SAFRP FMEEFMGRW30	1104993010	S20533156E055320492			00031000050148	0000			CONC/ASPH081FBWT			492801505	
SAFRP FMEEFMGRW32	1087603150	S20533675E055312674			00065116550148	0000			CONC/ASPH065FBWT			492811505	

You only have in your file the mandatory lines.